

# Learning from Las Vegas: An unconventional SAGE POE





# EFA Mobile App and Session Evaluations

## **Mobile App -**

If you have not done so already download the mobile app through your device app store. If you have any questions or need assistance please visit the mobile help desk

## **Session Evaluations - Rate Sessions Through the Mobile App**

Instructions :

1. Open and load mobile app
2. On the top navigation bar, select the screen icon
3. Locate and select the session you are attending – they are listed by day, track or type
4. After clicking on the individual session a navigation bar will appear on the left. Click the clipboard icon and evaluation/survey will begin.



# Learning Objectives

- Learn about the SAGE approach to Post Occupancy Evaluations
- Discover challenges that Elders might face negotiating Las Vegas
- Identify design features that either support or hinder older adults in any environment



# Team members

Maggie Calkins, PhD,

Researcher, Gerontologist, *The Mayer-Rothschild Foundation*

Jack Carman, RLA

Landscape Architect, *Design for Generations*

Nancy Carman

Geriatric Case Manager, Director of Home Health Care Services,  
*Virtua Hospital*





# Team members

Amy Carpenter, AIA, LEED ap

Architect, *SFCS Architecture*

Skip Gregory, NCARB

Former AHJ State of Florida, Code consultant

Migette Kaup, PhD, IIDA, ASID, IDEC, EDAC

Interior Designer, Educator, Researcher, *Kansas State University  
Center on Aging*



# Team members

Amy Wagenfeld, PhD, OTR/L, SCEM, FAOTA

Occupational Therapist, Educator, *Western Michigan University  
and University of Washington*



## Who is SAGE?

Non-profit organization

Culture Change organization focused on the  
built environment

Educational focus

Local and national events

[www.sagefederation.org](http://www.sagefederation.org)



**Mission** To promote collaboration among aging services providers, design professionals, regulators, residents, researchers, manufacturers, educators, students and others interested in providing innovative and appropriate environments for older adults.



## POE process

Process of evaluating buildings in use

Levels of evaluation possible

- Indicative
- Investigative
- Diagnostic

Conducting POE's since 1999



## SAGE Principles

- Physical safety and psychological security
- Environment as a therapeutic resource
- Holism and well-being
- Resident rights and personal autonomy
- Communities and relationships
- Support of caregivers
- Function enhancing technology
- Creating and evaluating





# Why do Seniors come here?

- Gambling
- Shows
- Family trips
- “Jaw dropping attractions and Glitz & Glamour”



# Why do seniors move here?

- Weather
- Low taxes (income, property & inheritance)
- Top notch restaurants
- Recreation and entertainment



# Why don't Seniors move here?

- Violent crime rate is 130% higher than national average
- “Sin City” – may offend some
- Limited Public transit



# What did we look at?

- New Strip area
- Old Strip/Downtown
- Affordable apartment complex just off-strip





## Themes:

- Wayfinding/Visual Issues
- Safety/Comfort
- Mobility/Access
- Features/Attractiveness





# Wayfinding/Visual Issues







## Interior Wayfinding

- Confusing Signage
- Distracting visual environment
- Flooring/circulation



↑ KÀ THEATRE

↑ LOBBY

BRAD GARRETT'S  
COMEDY CLUB ↑

↑ GRAND GARDEN  
ARENA

↑ VALET • SELF PARK

COPPERFIELD  
THEATER ↑

↑  **TOPGOLF**

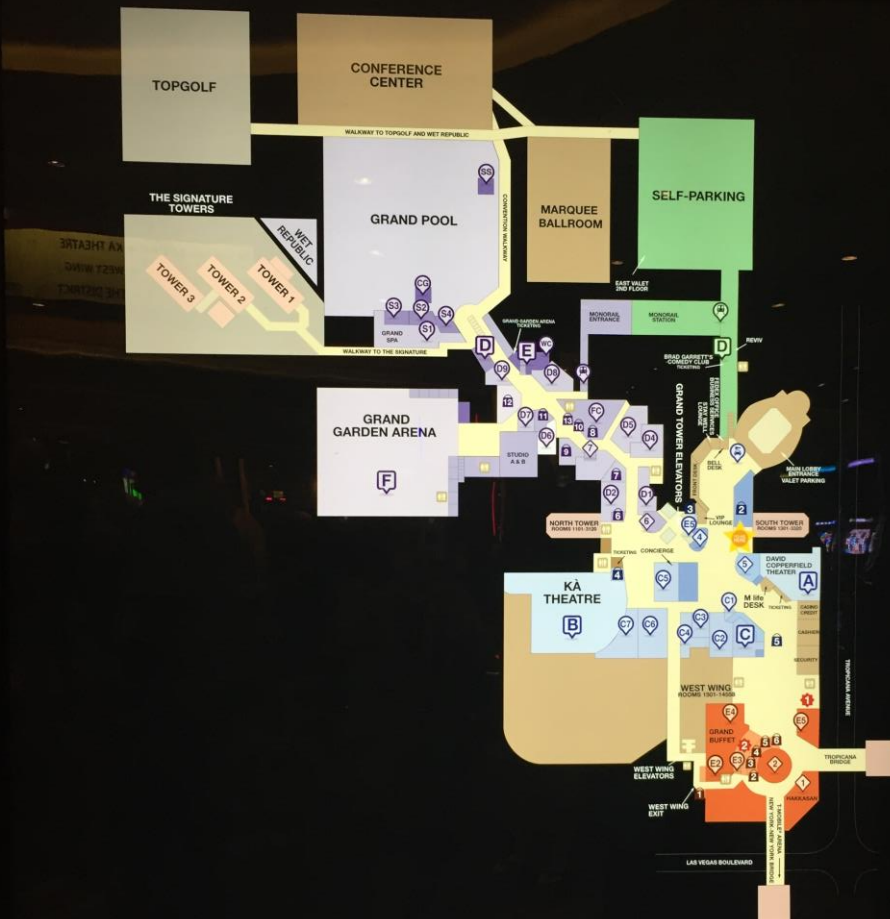
↑ THE DISTRICT





# HOTEL DIRECTORY

ON



THE CENTRAL						
GAMING		NIGHTLIFE	RESTAURANTS	SHOPPING	EXITS	
① Poker Room ② Race & Sports Book		① Hakkasan ② Centrifuge	① Hakkasan ② Starbucks ③ Stage Deli	① West Wing Essentials ② Forever Vegas ③ Boutique Electronics	① Essentials ② The Hat Shop ③ Fire CZ	New York-New York Bridge Walkway to T-Mobile Arena Tropicana Bridge West Wing Exit
CASINO						
ENTERTAINMENT	NIGHTLIFE	RESTAURANTS		SHOPPING	TRANSPORTATION	
① David Copperfield Theater ② KA Theatre ③ Jabbawockeez Theater	① Lobby Bar ② Whiskey Down Lounge & Gaming	① Starbucks ② Avenue Café Breakfast-Lunch ③ Grand Wok ④ Crush eat, drink, love		① Wolfgang Puck Bar & Grill ② L'Atelier de Joël Robuchon ③ Joël Robuchon ④ Corner Cakes	① MGM Grand & Company ② Newsstand ③ KA Boutique ④ Davidoff	① Avis Car Rental
THE DISTRICT						
ENTERTAINMENT		FOOD COURT	NIGHTLIFE	POOL	SALON & SPA	
① CBS Television City ② CSI: The Experience		Pan Asian Bonanno's Pizzeria	Nathan's Original Chicken Tender Starbucks	① Rouge ② 32°	① Cabana Grill ② Splash Shop Grand Pool	① Grand Spa ② Cristophe Salon ③ Spa Fitness Center ④ 3pa Barbershop

↑ GRAND GARDEN ARENA    ↑ SPA • SALON    WET REPUBLIC • POOL ↑  
↑ CONFERENCE CENTER    ↑ HECHO EN VEGAS MEXICAN GRILL    MONORAIL ↑  
↑ TOPGOLF    ↑ SIGNATURE    RESTROOMS ♀♂ ↑

PUB

PUB  
H22

FREE  
BEER

PUB  
H22

HECHO







#EFACON





ONORAIL

EXIT

EXIT

EXIT



ONORAIL





# Visual distraction





# Visual distraction











Flooring designates path







# Safety/Comfort

- Pervasive auditory environment – avg 85 Db
- Flooring/pavement issues
- Many ramps were difficult
- Lack of seating
- Lighting

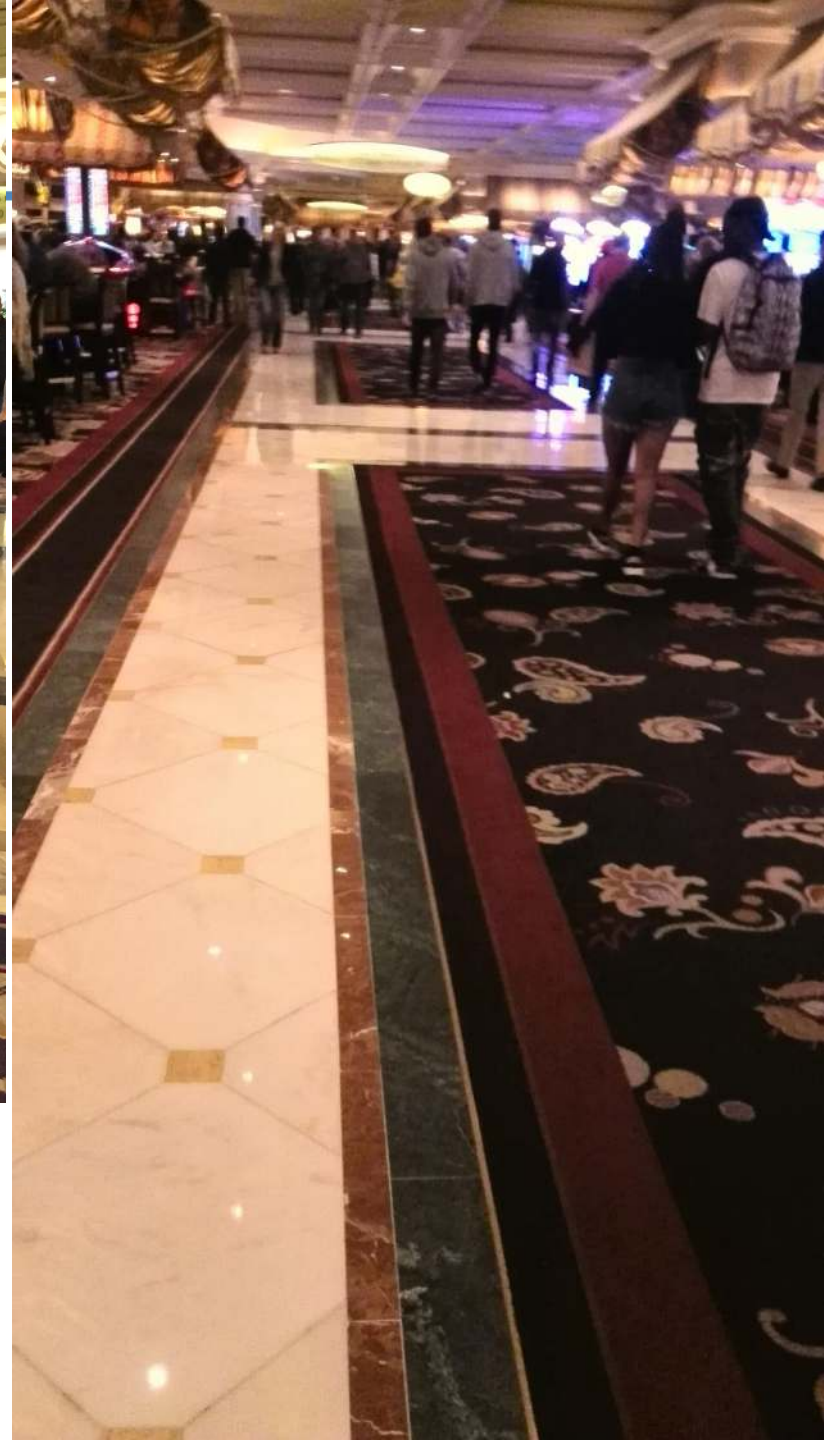






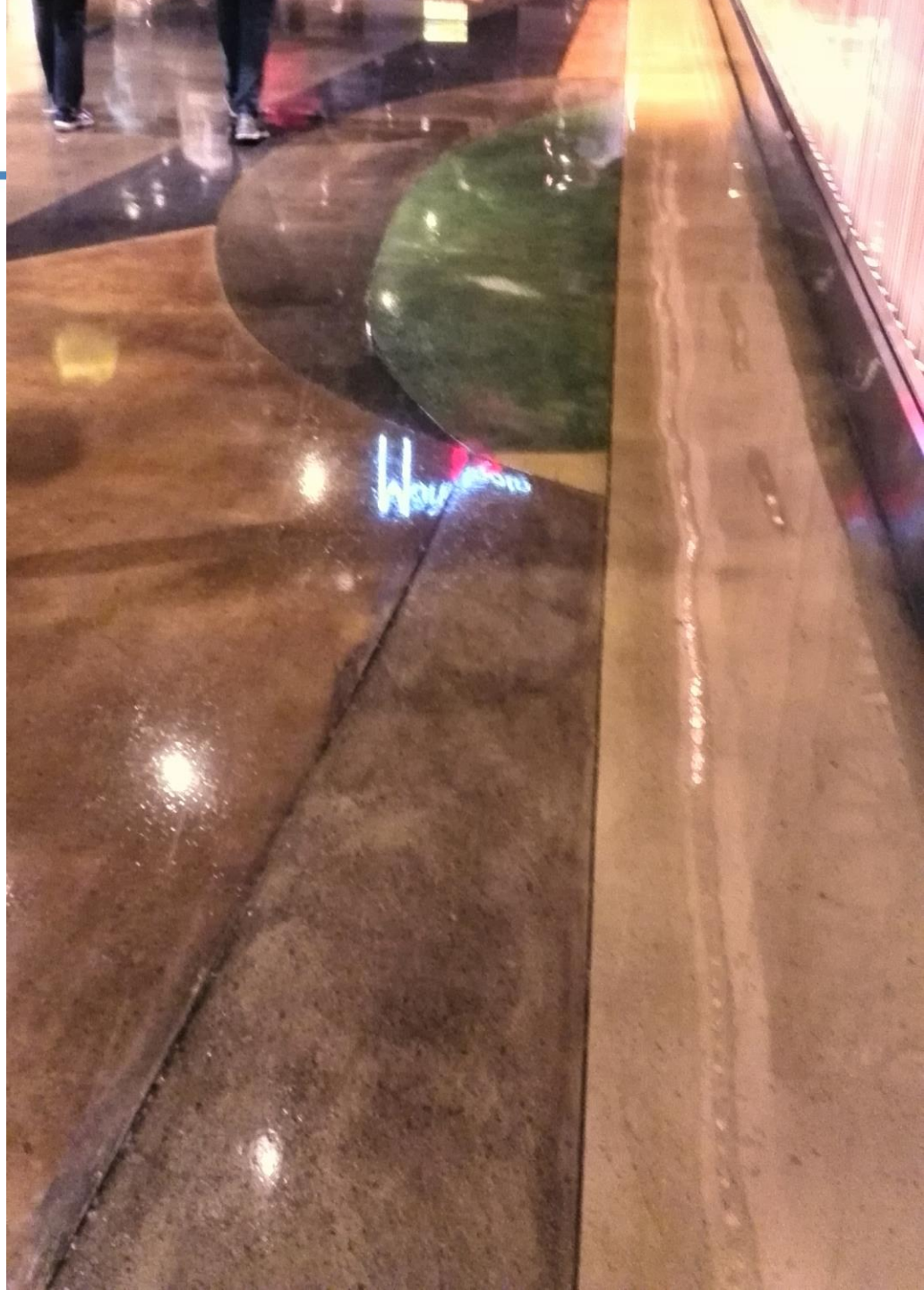
# Pervasive noise





Hard floor to carpet





















# Transition







# Seating







STARBUCKS

GIORDANO'S

BALLY'S  
LAS VEGAS

walk

JEWELERS  
JEWELRY & ART

lele

lele

lele

Giordano's

BALLY'S

QUICK

ITALIA





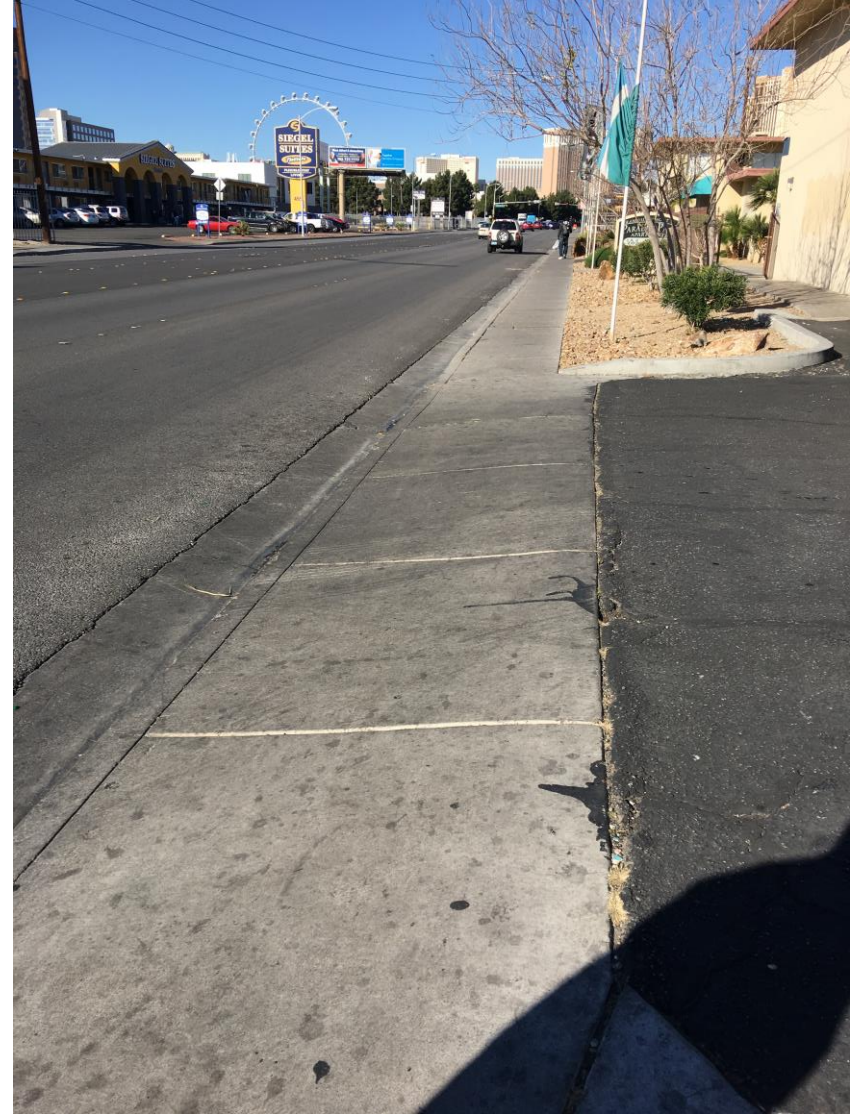








# Shade









# Restrooms













# Lighting







# Mobility/access

- Distance to accessible features





# Mobility/Access







# Features & Attractiveness

- Plantings
- Water Features
- Gathering Spaces







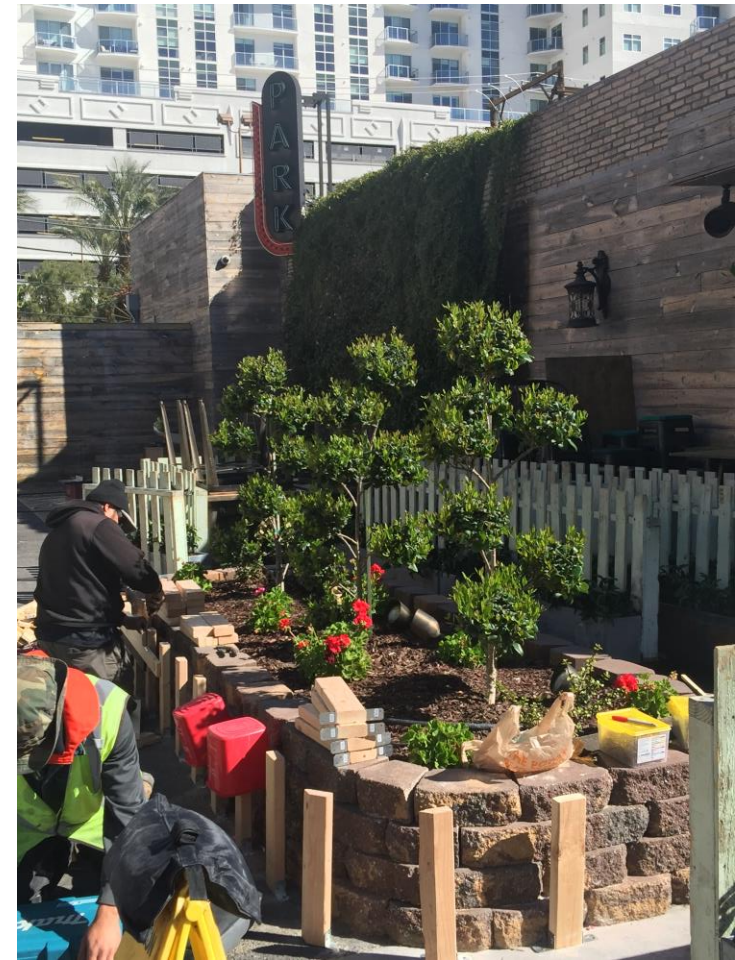
# Plantings/Landscape







# Plantings/Landscape







# When plants go bad...







# Water Features







# Gathering Spaces







# Gathering Spaces





# Container Park







# Container Park











## Key Take-Aways

- Fundamental difference in goals between Las Vegas and SAGE
- Think about all the senses when designing
- Always opportunity for improvement during regular maintenance



# Questions?







# Resources:

- An Audit of a Diverse Community for Safe Routes to Age in Place; Perez, Garces, Hunter and Marquez; Journal of Gerontological Nursing Vol. 41, No. 3. 2015
- CDC-HAN Environmental Audit Tool (HEAT); [Rebecca\\_Hunter@unc.edu](mailto:Rebecca_Hunter@unc.edu)