

**EFA Design  
Showcase Awards—  
A Presentation of  
Industry Leading  
Design Excellence**

*Presented by Rob Simonetti, Tom  
McQuillen, Nick Carpenter, Tim Gordon,  
Lori Wegman, and Penny Lake*





Simonetti



McQuillen



Carpenter

**Rob Simonetti**, AIA, LEED AP, BD+C – Senior Living Studio Leader, LaBella Associates

**Tom McQuillen**, AIA, LEED AP – Principal, Lizard Rock Designs

**Nick Carpenter**, NCARB – Associate, LRS Architects



Gordon



Wegman



Lake

**Tim Gordon**, AIA – Associate, Scott Edwards Architecture

**Lori Wegman**, ASID, IIDA – Founder, Wegman Design Group

**Penny Lake**, NCIDQ, LEED AP – Director of Interior Design, Lantz-Boggio Architects

SAGE is all about education, it is at the core of what we do. We bring the latest knowledge and developments to you from all aspects of senior living design.

[SAGEfederation.org](https://www.sagefederation.org)



*You will be muted during this webinar.*

*This webinar is being recorded, and a link to the recording will be emailed to all registrants within two business days.*



# AIA Continuing Education Provider

AIA Provider Number: 502111285

EFA Design Showcase Awards: A Presentation of Industry-Leading  
Design Excellence

SAGE1124

Presented by Rob Simonetti, Tom McQuillen, Nick Carpenter, Tim Gordon, Lori Wegman, and Penny Lake

10/16/24

This program is AIA-approved for 1 Learning Unit (LU)



# AIA Continuing Education Provider

Credit(s) earned on completion of this course will be reported to [AIA CES](#) for AIA members. Certificates of Completion for both AIA members and non-AIA members are available upon request.

This course is registered with [AIA CES](#) for continuing professional education. As such, it does not include content that may be deemed or construed to be an approval or endorsement by the AIA of any material of construction or any method or manner of handling, using, distributing, or dealing in any material or product.

---

Questions related to specific materials, methods, and services will be addressed at the conclusion of this presentation.

This presentation is protected by US and International Copyright laws. Reproduction, distribution, display and use of the presentation without written permission of the speaker is prohibited.

© SAGE 2023



## Course Description:

This session will review the Award of Merit- and Honorable Mention-winning projects from the **Environments for Aging**'s 2024 EFA Design Showcase. Session panelists will include team members representing the Award of Merit and Honorable Mention projects in addition to one member of the jury team. Project team panelists will describe each of the projects indicating how the project achieved excellence across the competitions four metrics: innovation, experience, aesthetics, and operations/well-being. The juror panelist will review industry and design trends noted in this year's submissions focusing on those that represent important ideas for the design community to incorporate into future environments.



# Learning Objectives:

- Learn about design attributes, challenges overcome, and solutions employed to create award-winning environments for aging.
- Understand innovative industry and design trends that represent important design concepts to incorporate into future environments.
- See how senior housing providers are positively impacting resident quality of life and the experiences of staff and family.
- Gain valuable insights into the design award submission, review, and award process.







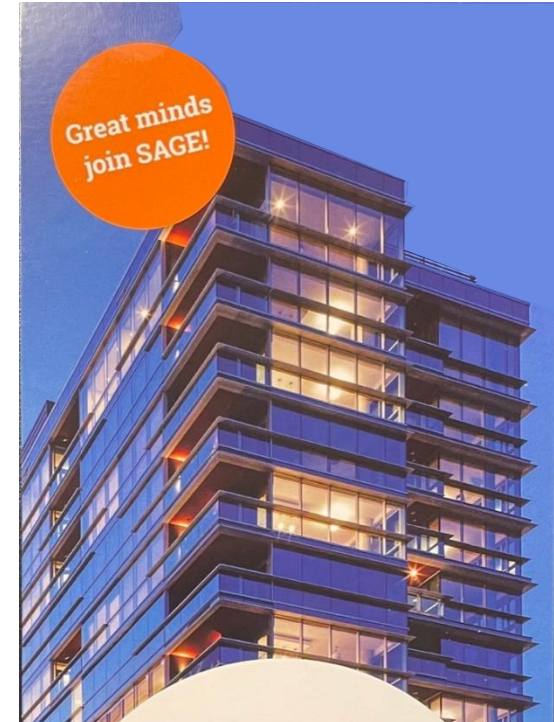
SAGE Members enjoy a **10% discount** off EFA conference registrations.

SAGE is a diverse network that is committed to inspiring and creating environments where older adults can thrive. Our members leverage collaborative opportunities to engage in research, education, advocacy and innovation.

FREE AIA-approved webinars every month and those webinars are recorded and can be accessed in the Members-Only section of the SAGE website.

Access SAGE Post Occupancy Evaluation White Papers

Engage in great industry initiatives, networking opportunities, Member Receptions





Published each year in the Spring issue of *Environments for Aging*, the EFA Design Showcase offers a compilation of architecture and interior design projects representing outstanding innovative design solutions in new or renovated senior care environments across the nation.

***2025 Environments for Aging Design Showcase:  
Reservations due November 13, 2024  
Presentations due December 4, 2024***

**[www.efamagazine.com/events/design-showcase](http://www.efamagazine.com/events/design-showcase)**

## Jury makeup

- Architects
- Interior Designers
- Providers
- Consultants, Regulators, Educators

## Competition Metrics

- Aesthetics
- Experience/Collaboration
- Innovation
- Operations/Well-Being



environments  
for aging

## Meet the 2024 Jury

**Beth Arokoyo**, project manager / senior designer (Spellman, Brady & Company)

**Meghan Barnes**, VP (Wegman Design Group)

**Joan Devine**, former director of education (Pioneer Network)

**Tom Dillenbeck**, senior VP (Hobbs+Black Architects)

**Anne Dinardo**, editor-in-chief (Environments for Aging)

**Timothy Gordon**, associate, project architect & designer (Scott Edwards Architecture)

**Stacy Hollinger Main**, partner (RLPS Architects & Interiors)

**Thomas McQuillen**, principal (Lizard Rock Designs, LLC)

**BJ Miller Prosser**, president (The Vision Group Studios, LLC) and managing partner (PAMG)

**Justin Schiff**, director, project development (Shell Point Retirement Community)

**Cynthia Shonaiya**, principal, senior living & affordable housing market sector leader (Hord Coplan Macht)

**Tiffany Tello**, health care administrator (Querencia at Barton Creek)

**Lisa Warnock**, principal (Glow Interior Designs)

**Teresa Whittington**, co-owner/co-founder (Teresa's House)





HONORABLE MENTION



LANTZ BOGGIO / ARCHITECTS

The Davis Community

WILMINGTON, NORTH CAROLINA

environments  
for aging





# The Davis Community

WILMINGTON, NORTH CAROLINA

environments  
for aging



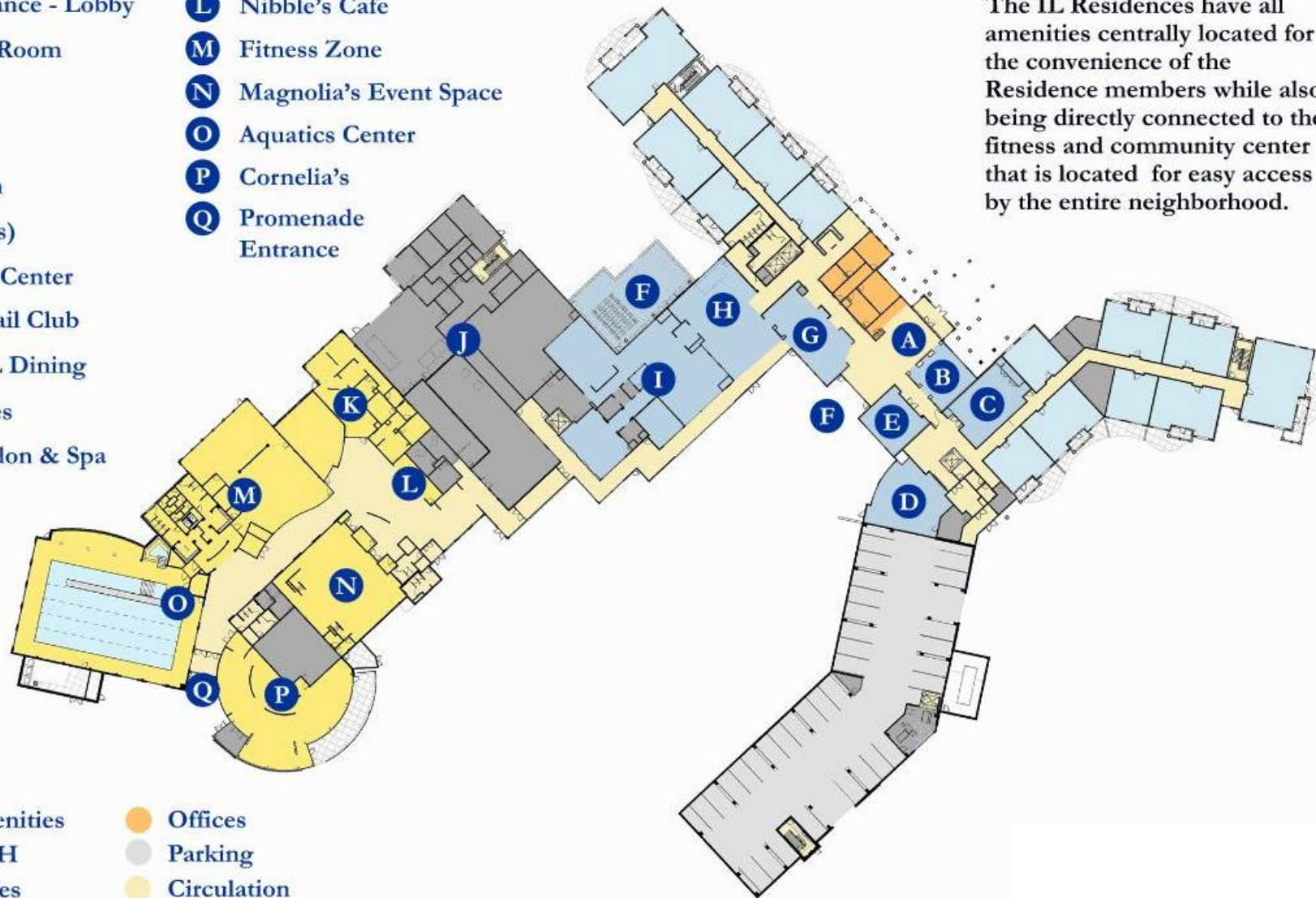






- A** Main Entrance - Lobby
- B** The Front Room
- C** Theater
- D** Art Room
- E** Club Room
- F** Courtyard(s)
- G** The Social Center
- H** The Cocktail Club
- I** Cascade IL Dining
- J** Staff Spaces
- K** Serenity Salon & Spa
- L** Nibble's Cafe
- M** Fitness Zone
- N** Magnolia's Event Space
- O** Aquatics Center
- P** Cornelia's
- Q** Promenade Entrance

- Public Amenities
- Staff / BOH
- IL Amenities
- IL Residences
- Offices
- Parking
- Circulation



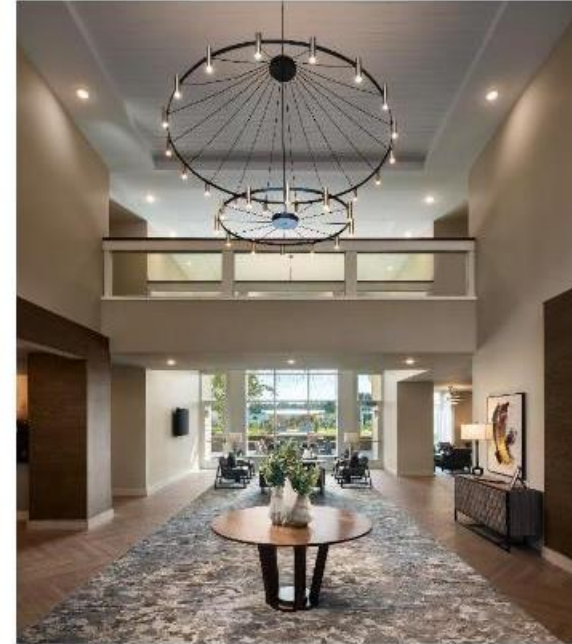
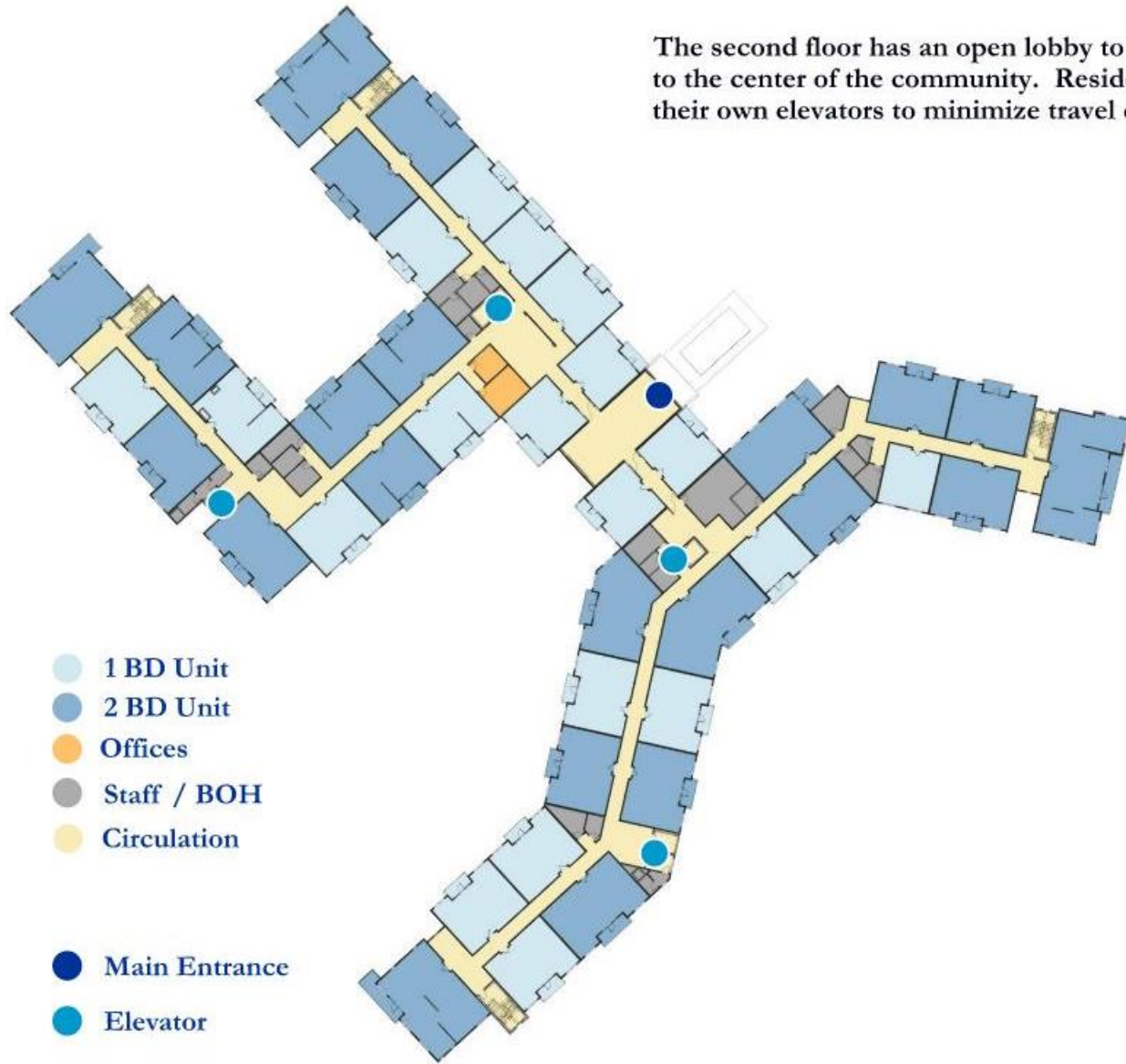
The IL Residences have all amenities centrally located for the convenience of the Residence members while also being directly connected to the fitness and community center that is located for easy access by the entire neighborhood.

## “The Residences”

With 141 units and a large variety of options, The Residences offer full-service amenities and comfortable, functional living spaces for residents.



The second floor has an open lobby to below that reconnects and orients residents to the center of the community. Resident units are divided amongst wings with their own elevators to minimize travel distances to the amenity spaces.



Main Entrance





# The Davis Community

WILMINGTON, NORTH CAROLINA

environments  
for aging





JUROR COMMENTS:

THE CENTER CONTRIBUTES TO THE WELLNESS OF RESIDENTS AND STAFF, AND IT CONNECTS THE COMMUNITY TO ITS NEIGHBORS IN AN AUTHENTIC WAY BY INCLUDING FACILITIES FOR RENTALS, WEDDINGS, PUBLIC PERFORMANCE, AND MEETINGS.

INTERIORS ARE WARM AND USE NATURAL MATERIALS.

DINING OPTIONS RANGE FROM FORMAL TO INFORMAL AND HAVE VIEWS OF THE NEARBY REFLECTING POND.

HONORABLE MENTION



WEGMAN DESIGN GROUP INC

# Moorings Park Grande Lake Clubhouse

NAPLES, FLORIDA

environments  
for aging



# Moorings Park Grande Lake Clubhouse

NAPLES, FLORIDA

environments  
for aging



# Moorings Park Grande Lake Clubhouse

NAPLES, FLORIDA

environments  
for aging





# Moorings Park Grande Lake Clubhouse

NAPLES, FLORIDA

environments  
for aging



# Moorings Park Grande Lake Clubhouse

NAPLES, FLORIDA

environments  
for aging





# Moorings Park Grande Lake Clubhouse

NAPLES, FLORIDA

environments  
for aging



# Moorings Park Grande Lake Clubhouse

NAPLES, FLORIDA

environments  
for aging





# Moorings Park Grande Lake Clubhouse

NAPLES, FLORIDA

environments  
for aging



# Moorings Park Grande Lake Clubhouse

NAPLES, FLORIDA

environments  
for aging



JUROR COMMENTS:

THE CLUBHOUSE AT MOORINGS PARK GRAND LAKE DRAWS RESIDENTS IN FOR ACTIVITIES, FITNESS, FOOD AND LIFE ENRICHMENT.

AMENITIES ARE WALKABLE AND EASILY ACCESSIBLE IN A LUXURIOUS SETTING WHILE ACHIEVING LEED CERTIFICATION.

THE CLUBHOUSE USES INNOVATIVE TECHNOLOGIES TO SUPPORT AGING IN PLACE.

HONORABLE MENTION

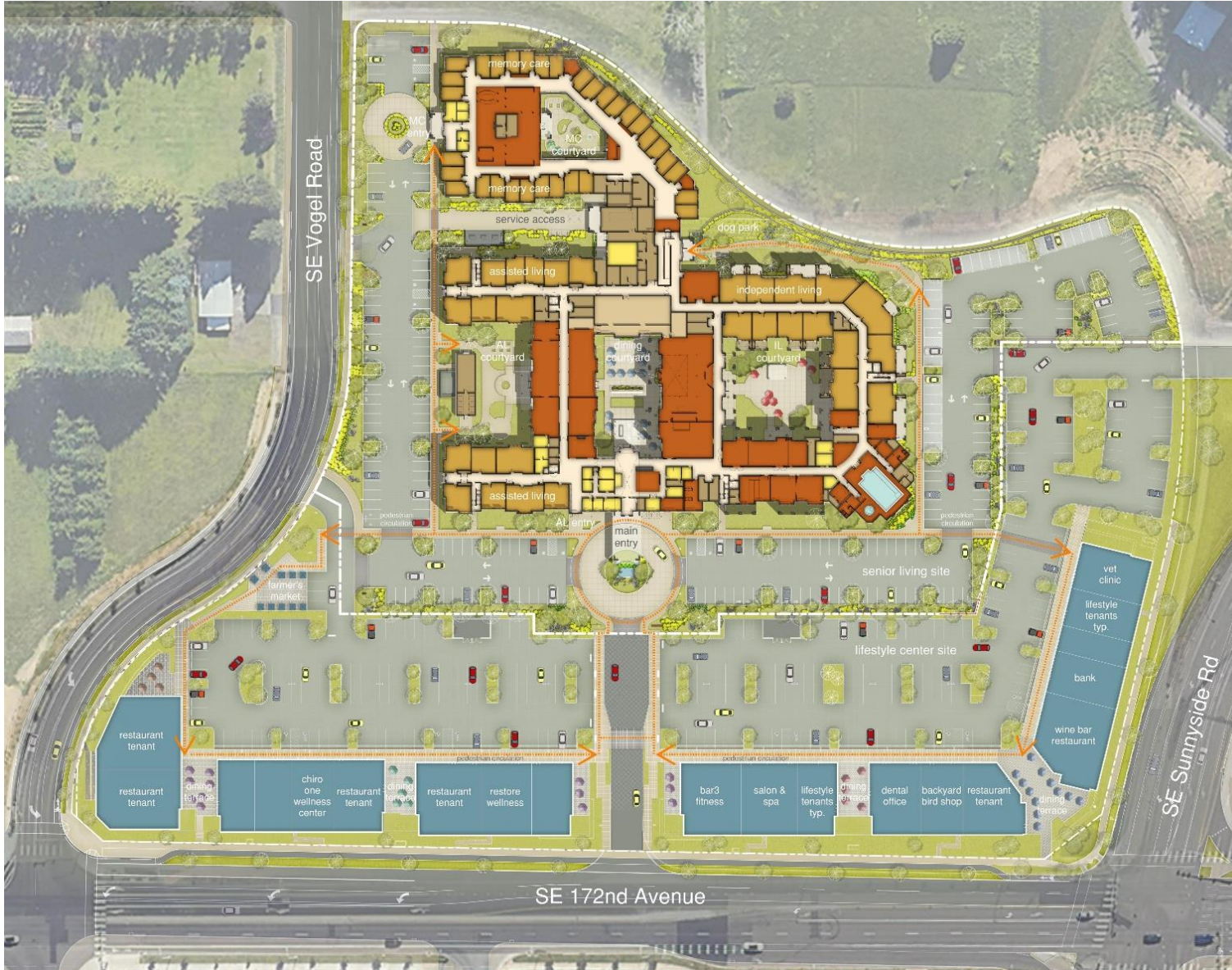


LRS ARCHITECTS

# The Springs at Happy Valley

HAPPY VALLEY, OREGON

environments  
for aging





# The Springs at Happy Valley

HAPPY VALLEY, OREGON

environments  
for aging



# The Springs at Happy Valley

HAPPY VALLEY, OREGON

environments  
for aging



# The Springs at Happy Valley

HAPPY VALLEY, OREGON

environments  
for aging



# The Springs at Happy Valley

HAPPY VALLEY, OREGON

environments  
for aging



# The Springs at Happy Valley

HAPPY VALLEY, OREGON

environments  
for aging



# The Springs at Happy Valley

HAPPY VALLEY, OREGON

environments  
for aging



# The Springs at Happy Valley

HAPPY VALLEY, OREGON

environments  
for aging



# The Springs at Happy Valley

HAPPY VALLEY, OREGON

environments  
for aging





# The Springs at Happy Valley

HAPPY VALLEY, OREGON

environments  
for aging



# The Springs at Happy Valley

HAPPY VALLEY, OREGON

environments  
for aging



# The Springs at Happy Valley

HAPPY VALLEY, OREGON

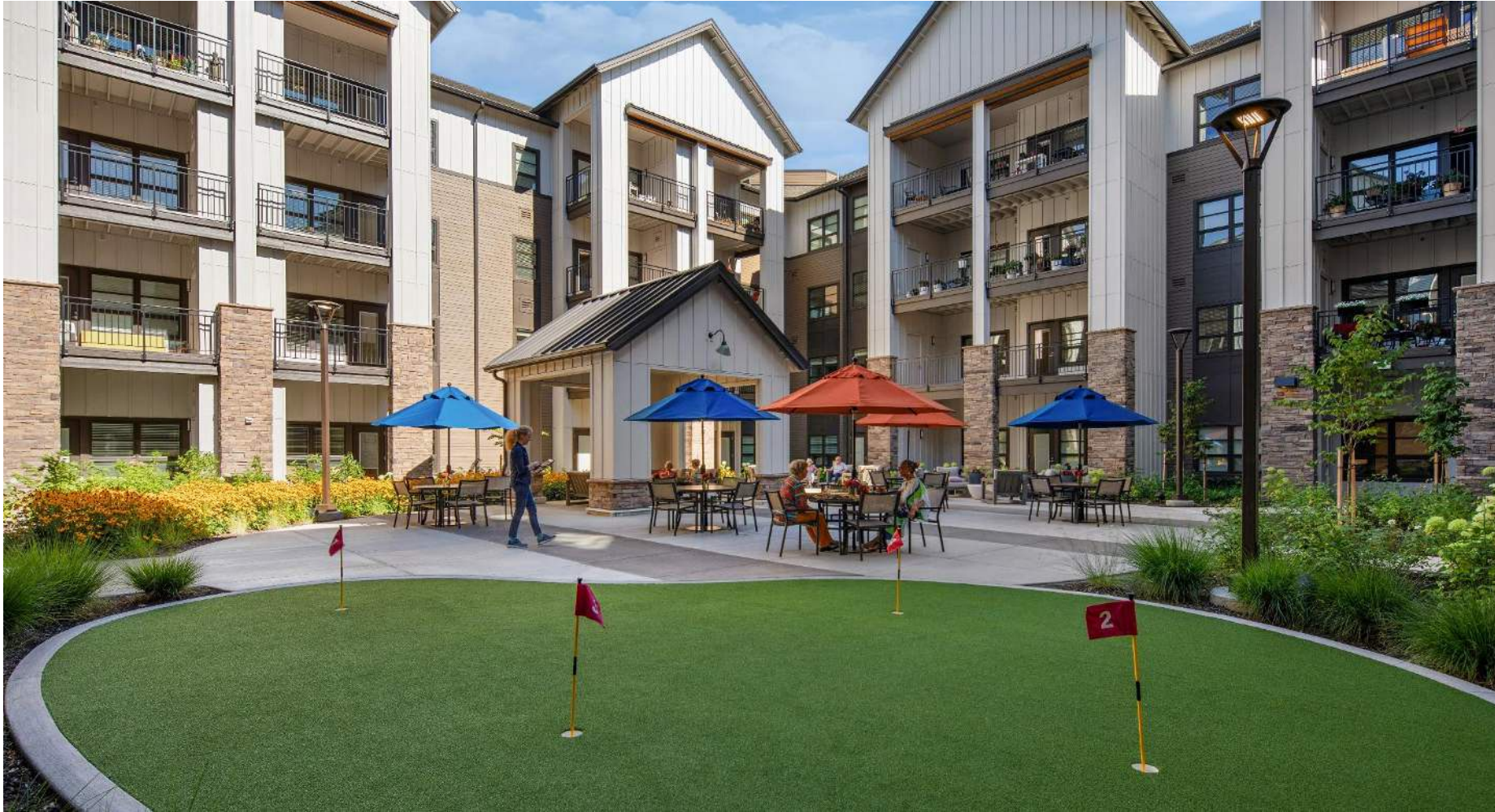
environments  
for aging



# The Springs at Happy Valley

HAPPY VALLEY, OREGON

environments  
for aging



JUROR COMMENTS:

THOUGHTFUL INTEGRATION OF RETAIL AND OLDER ADULT LIVING  
ENCOURAGING RESIDENTS TO GET OUT, WALK, SOCIALIZE AND  
FEEL LIKE THEY HAVE THEIR OWN NEIGHBORHOOD.

THE PROJECT PROVIDES COST-EFFECTIVE SENIOR LIVING IN AN  
URBAN SETTING.

MODERN FARMHOUSE AND DECONSTRUCTED BARN AESTHETIC  
TIE STRONGLY TO THE PACIFIC NORTHWEST SETTING.

AWARD OF MERIT



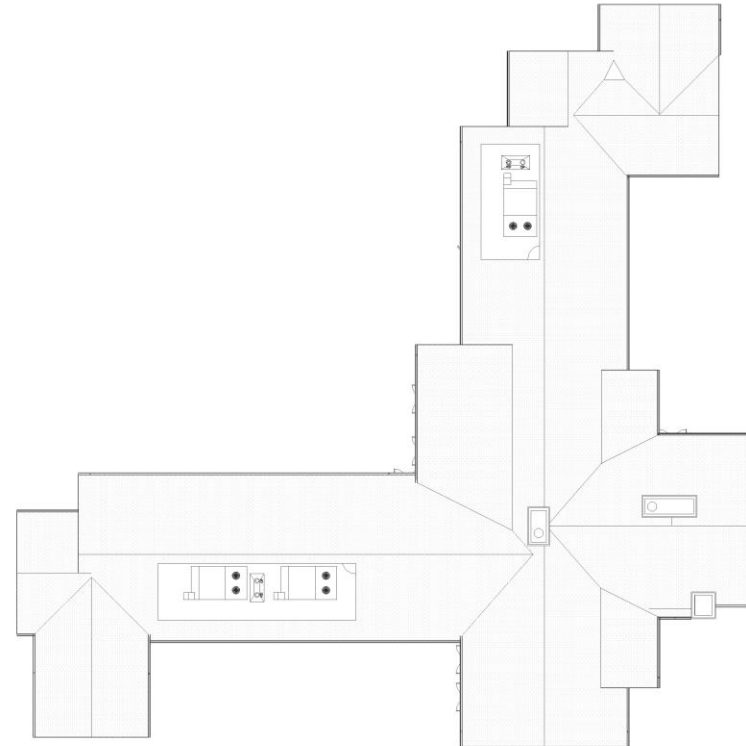
SCOTT EDWARDS ARCHITECTURE













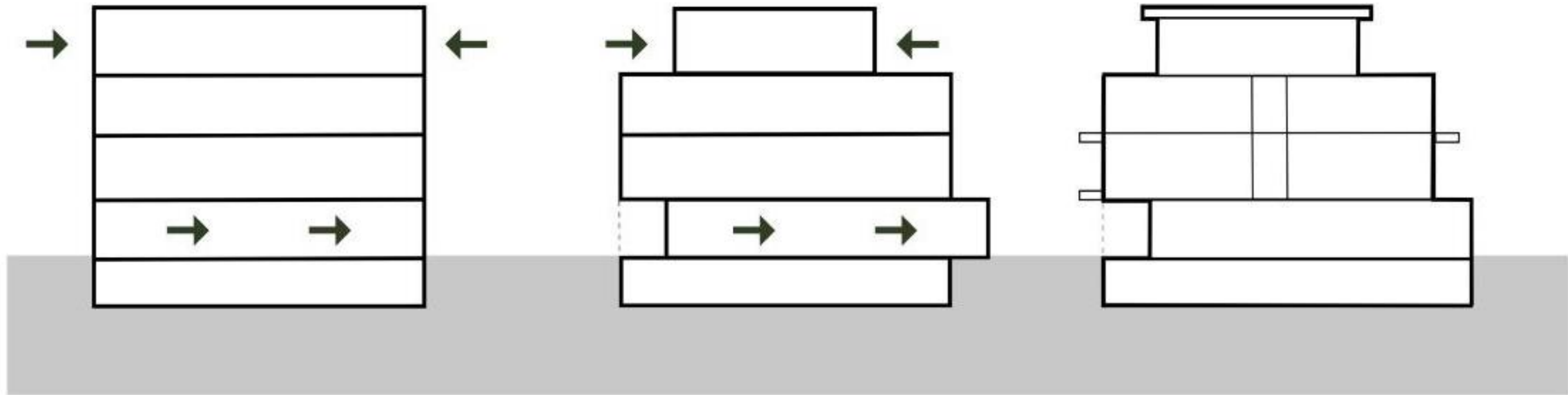
Rose Villa Senior Living Phase 3

PORTLAND, OREGON

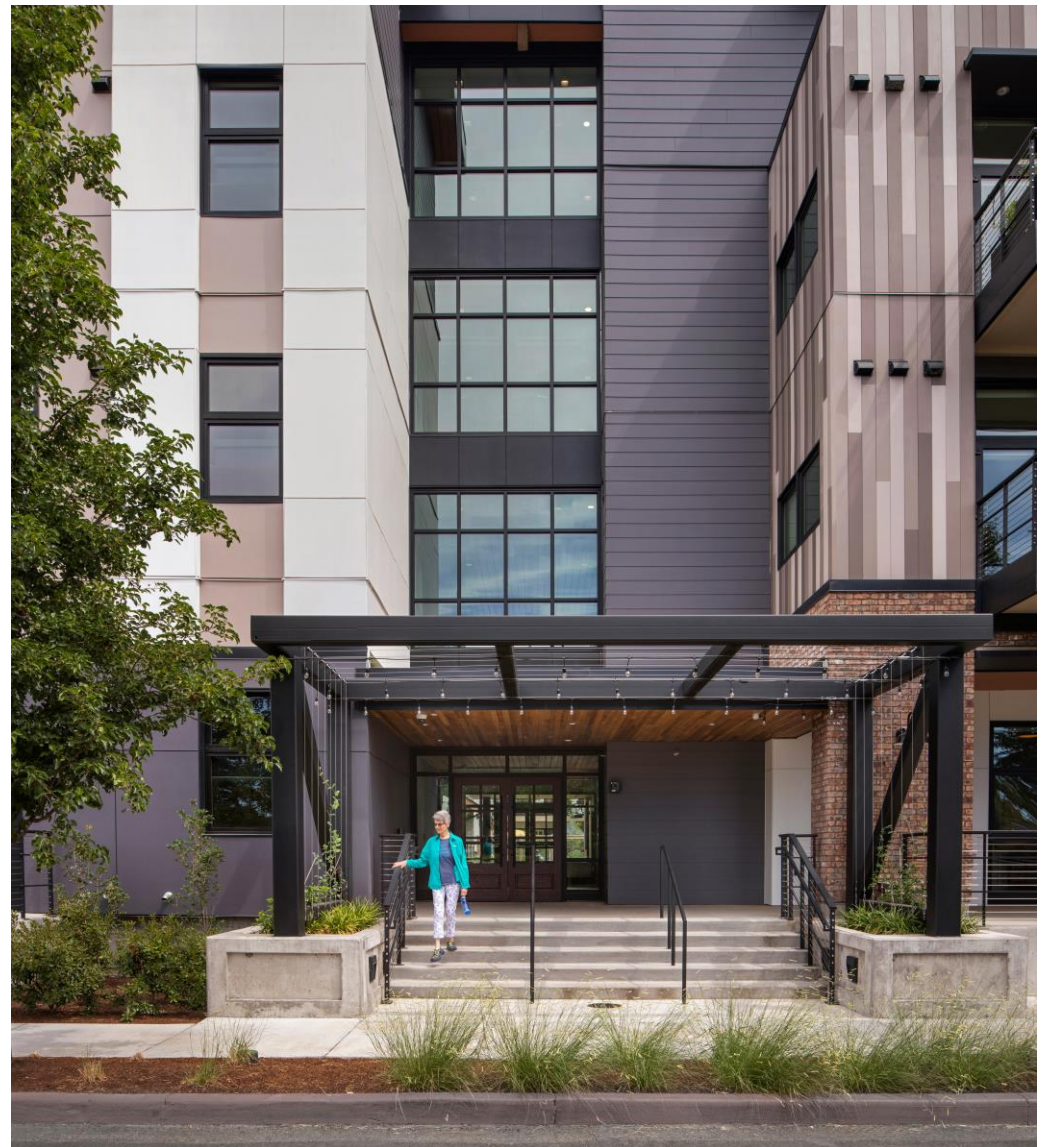
environments  
for aging



Photography by David Papazian















# Rose Villa Senior Living Phase 3

PORTLAND, OREGON

environments  
for aging



Photography by David Papazian

# Rose Villa Senior Living Phase 3

PORTLAND, OREGON

environments  
for aging

















JUROR COMMENTS:

INNOVATIVE ON MANY LEVELS.

THE PROJECT INTEGRATED INDEPENDENT LIVING, SUPPORTIVE LIVING, CHILDCARE, AND THE LARGER COMMUNITY AROUND A SHARED COURTYARD TO FOSTER CONNECTION AND ENGAGEMENT.

EMPHASIS ON THE IMPORTANCE OF STAFF, INCLUDING LOCATING STAFF SPACES ON HIGHER LEVELS WITH VIEWS AND ACCESS TO DAYLIGHT.

STRONG ENVIRONMENTAL COMMITMENT, UTILIZING BOTH AN INNOVATIVE GREYWATER SYSTEM AND CIRCADIAN LIGHTING SYSTEM IN RESIDENT SPACES.

# AIA Continuing Education Provider

This concludes The American Institute of Architects  
Continuing Education Systems Course





Simonetti



McQuillen



Carpenter



Gordon



Wegman



Lake

**Rob Simonetti**, Senior Living Studio Leader, LaBella Associates  
[rsimonetti@labellapc.com](mailto:rsimonetti@labellapc.com)

**Tom McQuillen**, Principal, Lizard Rock Designs  
[tmcquillen@lrd-az.com](mailto:tmcquillen@lrd-az.com)

**Nick Carpenter**, Associate, LRS Architects  
[ncarpenter@lrsarchitects.com](mailto:ncarpenter@lrsarchitects.com)

**Tim Gordon**, Associate, Scott Edwards Architecture  
[tgordon@seallp.com](mailto:tgordon@seallp.com)

**Lori Wegman**, Founder, Wegman Design Group  
[lori@wegmandesigngroup.com](mailto:lori@wegmandesigngroup.com)

**Penny Lake**, Director of Interior Design, Lantz-Boggio Architects  
[plake@lantz-boggio.com](mailto:plake@lantz-boggio.com)

Thank you for joining us today!

Please complete the survey.



Society for the Advancement of  
Gerontological Environments