

Environments for Aging Remodel/Renovation Competition: A Review of the 2023 Winners

*Presented by Lisa Warnock, Emily Weber,
Christine Kepko, and Karen Davis*





Moderator/Jury Representative

Lisa Warnock, Principal
Glow Interior Designs, LLC
(Portland, OR)



Emily



Christine



Karen

Bronze Winner:

The Garlands of Barrington, The Galleria (Barrington, Ill.)
Submitted by: **Eppstein Uhen Architects, Inc.**
Representative: *Karen Davis*, Senior Interior Designer

Silver Winner:

RiverWalk by RiverSpring Living, Bar & Restaurant (Riverdale, N.Y.)
Submitted by: **Merlino Design Partnership, Inc.**
Representative: *Christine Kepko*, Associate

Gold Winner:

Wesley on Grand, Chamberlain Main Floor Fireside (Des Moines, IA)
Submitted by: **Pope Design Group**
Representative: *Emily Weber*, Senior Interior Designer

Our Mission

SAGE is a diverse network that is committed to inspiring and creating environments where older adults can thrive. To accomplish this, our members leverage collaborative opportunities to engage in research, education, advocacy and innovation.

Partnership

Provide a nexus for collaboration among all disciplines involved in the development, operation, and regulation of settings for older adults.

Advocacy

Promote regulatory change and research that supports resident-centered care.

Research

Evaluate senior living environments based on SAGE's design principles and share results through conferences and publications.

Education

Offer educational forums that feature current research and best practices for the design of living environments.



You will be muted during this webinar.

This webinar is being recorded, and a link to the recording will be emailed to all registrants.

AIA Continuing Education Provider

AIA Provider Number: 502111285

EFA Remodel/Renovation Competition: A Review of the 2023
Winners

SAGE0624

Presented by *Lisa Warnock, Emily Weber, Christine Kepko, and Karen Davis*

06/06/24

This program is AIA-approved for 1 Learning Unit (LU)



AIA Continuing Education Provider

Credit(s) earned on completion of this course will be reported to **AIA CES** for AIA members. Certificates of Completion for both AIA members and non-AIA members are available upon request.

This course is registered with **AIA CES** for continuing professional education. As such, it does not include content that may be deemed or construed to be an approval or endorsement by the AIA of any material of construction or any method or manner of handling, using, distributing, or dealing in any material or product.

Questions related to specific materials, methods, and services will be addressed at the conclusion of this presentation.

This presentation is protected by US and International Copyright laws. Reproduction, distribution, display and use of the presentation without written permission of the speaker is prohibited.

© SAGE 2024



Course Description:

Environments for Aging magazine's annual Remodel/Renovation Competition sheds light on projects that have noteworthy aspects to inspire future renovation projects, big or small. This presentation, led by EFA's association partner SAGE, brings together winners from the 2023 competition to explore each one and how they approached their unique environments to create more meaningful settings. Attendees will walk away with a thorough understanding of what types of challenges emerge during remodels and renovations and how these proven project teams addressed those challenges. Attendees will also learn about the competition submission process and key elements to include in future submissions.



Learning Objectives:

- Learn about renovation projects ranging in size, scope, and costs for a variety of older adult settings.
- Learn about design attributes, challenges, and solutions employed to create award-winning environments for aging.
- Understand the importance of including operational factors into the design process and how operators are positively impacting quality of life for residents, families, and staff.
- Gain insights into the design award submission, review, and award process



Session Content

- The EFA Annual Remodel/Renovation Competition History and Purpose
- The 15th Annual 2023 Review Process
- The 15th Annual 2023 Award Winner Presentations
- The 16th Annual 2024 Submittal Process and Juror Opportunities
- Questions and Answers Session, with the 2023 Award Winning Teams

environments
for aging

15TH ANNUAL REMODEL/ RENOVATION COMPETITION CALL FOR SUBMISSIONS



If your organization or firm has recently renovated space(s) within a senior living community, this competition is for you!

The top three projects will receive Gold, Silver, and Bronze awards. All projects will be published* in the Winter 2023 print and online editions. Award recipients will be honored at the 2024 Environments for Aging Conference + Expo.

RESERVATIONS DUE: AUGUST 3
PRESENTATIONS DUE: AUGUST 24

Entry fee: \$700 per submission

Entries must detail the renovation of a single space, which may be any area within a senior living community, such as dining areas, resident rooms, activity zones, spas, chapels, theaters, and more.

New in 2023: In addition to completed projects, EFA is now accepting projects in progress and unbuilt/conceptual designs. Submission must include quality renderings.

LEARN MORE: EFAmagazine.com/renovate
CONTACT: Donna Hidalgo at 210.419.9017 or donna.hidalgo@emeraldix.com

* All projects will be featured in a Remodel/Renovation Gallery, also appearing in the Winter 2023 issue, with a quarter-page project description and photos allowing readers an opportunity to view all of the competition entries. Award-winning projects will be upgraded to a full page or spread.
2023 Call Winner: "Sensational Memory Care" at The Village - Memory Care Center/Spa, submitted by Focus Healthcare Partners. Photo: Black Dog Strategies



2023 Recognition:

A panel of experts, appointed by EMERALD reviewed all of the 2023 submissions and determined the Gold, Silver, and Bronze winners. Winners receive special recognition at the 2024 Environments for Aging Expo & Conference and bonus coverage of their projects was included in the Winter 2023 issue of Environments for Aging.

Congratulations to the 2023 Winners!

The Bronze Winner: The Garlands of Barrington, The Galleria (Barrington, Ill.)
Submitted by: Eppstein Uhen Architects, Inc

The Silver Winner: RiverWalk by RiverSpring Living, Bar & Restaurant (Riverdale, N.Y.)
Submitted by: Merlino Design Partnership, Inc.

The Gold Winner: Wesley on Grand, Chamberlain Main Floor Fireside (Des Moines, IA)
Submitted by: Pope Design Group

For more information about the 2023 Winners visit the EFA Magazine website.

Roger L.	Beins	Menno Haven Retirement Communities	CHIEF OPERATING OFFICER
Margaret	Calkins, PhD	IDEAS Institute	SENIOR RESEARCHER AND BOARD CHAIR
Andrew	Centanni	Elim Care, Inc.	DIRECTOR OF PROJECT MANAGEMENT
Rachelle	DeGeorge	Studio 121, Inc.	PRINCIPAL - INTERIOR DESIGNER
Marco	DePalma	The Belaire Group, LLC	PRESIDENT
Tom	Dillenbeck	Hobbs+Black Architects	SENIOR VICE PRESIDENT
Jennifer	Fleming	Rice Fergus Miller	OWNER AND PRINCIPAL
Hao	Huang	Texas A&M University	PHD CANDIDATE
Jim	Hudgins	THW Design	PRESIDENT
Dinah	Martin Kmetz	Saint Therese	EXECUTIVE DIRECTOR PROJECT MANAGEMENT
Paula	Ledbetter	Mather	VICE PRESIDENT
Sharon	Lessard	Ensemble	CHIEF CREATIVE OFFICER
Eileen	Nacht	RDL Architects	SENIOR LIVING STUDIO DIRECTOR
Stacy	Peters	Faulkner Design Group	PRINCIPAL
Shannon	Remaley	Meyer	PRINCIPAL

Jurors represent multi-disciplinary backgrounds and experience, and include Providers, Academics, Architects, Interior Designers, Researchers, and Regulators.

Thank you!


2023 Project Submittal and Review Notes:

- 29 Projects Reviewed by 15 Jurors made up of Senior Living Providers, Architects, Interior Designers, and Industry Consultants.
- **Round I:** The projects were split between two groups of jurors to narrow down the projects to the top 7.
- **Round II:** The top 7 were further reviewed and the top 3 were named Gold, Silver and Bronze award winners.
- All 3 winning projects are represented here today and received editorial coverage of their projects, in the Winter 2023 issue of the Environments for Aging magazine.

Interested in serving as a Juror for the 16th Annual 2024 EFA Remodel / Renovation Competition? Use the QR code or visit:
<https://app.smartsheet.com/b/form/a5f469d6648c406a8c6eba47a2c9f9ed>

Welcome to EFA's 2023 REMODEL/RENOVATION COMPETITION

IN ORDER FOR senior living communities to remain competitive, attract new residents, and best serve existing residents and staff, it's critical for spaces to be refreshed and, at times, reinvented. On the following pages, you'll find three projects that stood out for successfully breathing new life into existing spaces to better meet the needs of all. Here in the 15th annual EFA Remodel/Renovation Competition, Gold, Silver, and Bronze winners are highlighted, with narratives describing project goals and how the resulting designs responded to those specific needs. Additionally, we have a gallery of all projects submitted to the program this year so you can explore even more outstanding renovations. Many thanks go out to our jury members, listed below, for taking the time to review the submissions and vote for their favorites. And congratulations to our winners! Please join us in celebrating their accomplishments next year during the EFA Magazine Awards Luncheon to be held at the 2024 Environments for Aging Conference + Expo taking place April 13-16 in Atlanta. —*Jennifer Kovacs Silvis, editor-in-chief*



The 15th Annual, 2023 Award Winners

Projects and Teams



The Garlands of Barrington, The Galleria [Barrington, Ill.]

Submitted by: **EUA, Epstein Uhen Architects** [Milwaukee]

Community Name:

The Garlands of Barrington

- Single Space Brief
Description: **The Galleria**
- City, State: **Barrington, IL**
- Total renovation cost: **\$1.3M**
- Cost per square foot: \$193
- Residents Served:
Independent Living
- Completion Date: **June 2023**
- Presenter: **Karen Davis,
Senior Interior Designer**



JURY COMMENTS:

- *This project is a well-done transformation of space which required a vision to open up the rooms and detailed consideration to integrate the hallway into the plan. The care in listening to the residents is important and the end product looks amazing.*
- *Great incorporation of the residents and staff in the planning and design of their new space. A wonderful example of modernizing a space while keeping the original aesthetic of the remaining community. This is a space that seems as functional as it is beautiful due to great design planning and execution.*



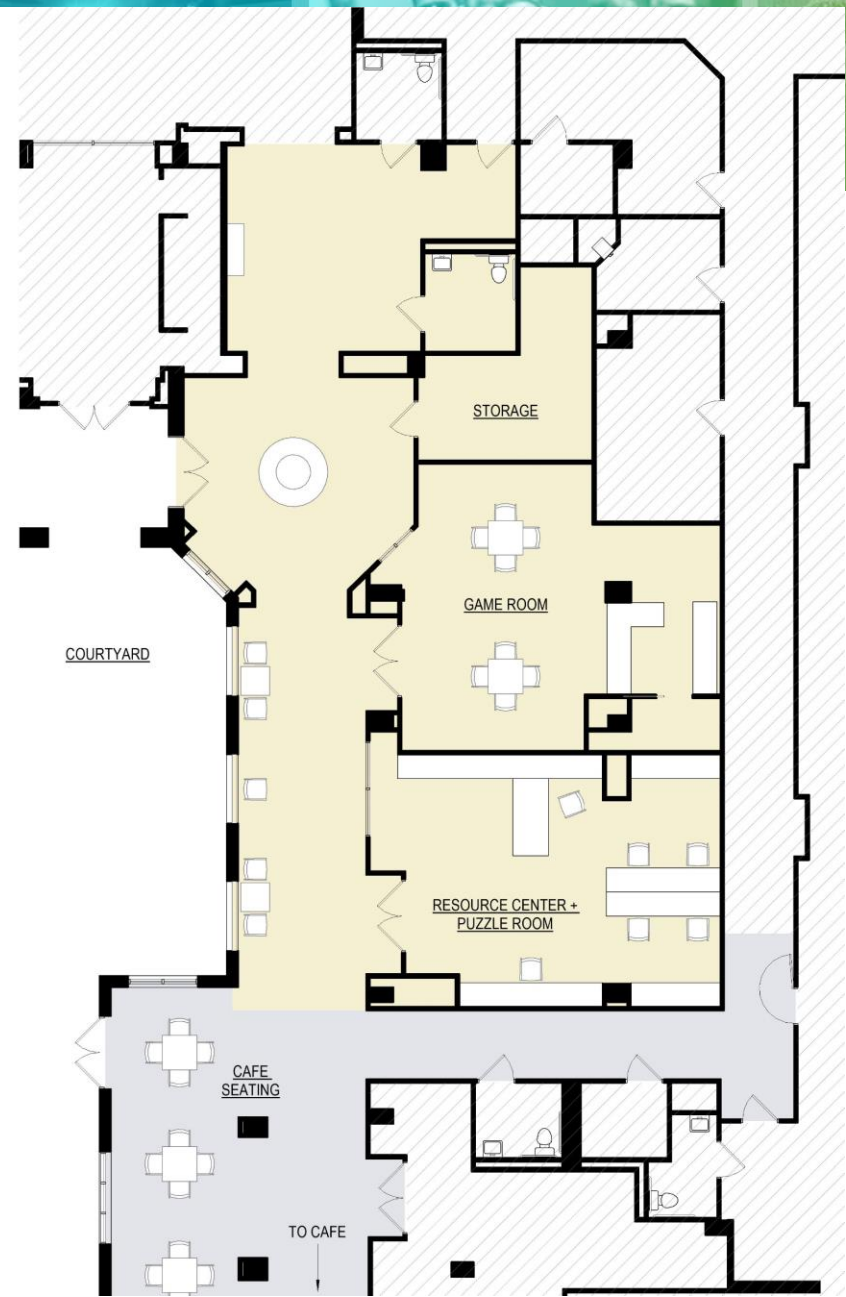
The Garlands of Barrington Campus and Context

Floor Plan (Before)



LEGEND

- RENOVATED SPACE
- NEW FINISHES ONLY
- NOT IN CONTRACT

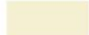
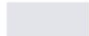



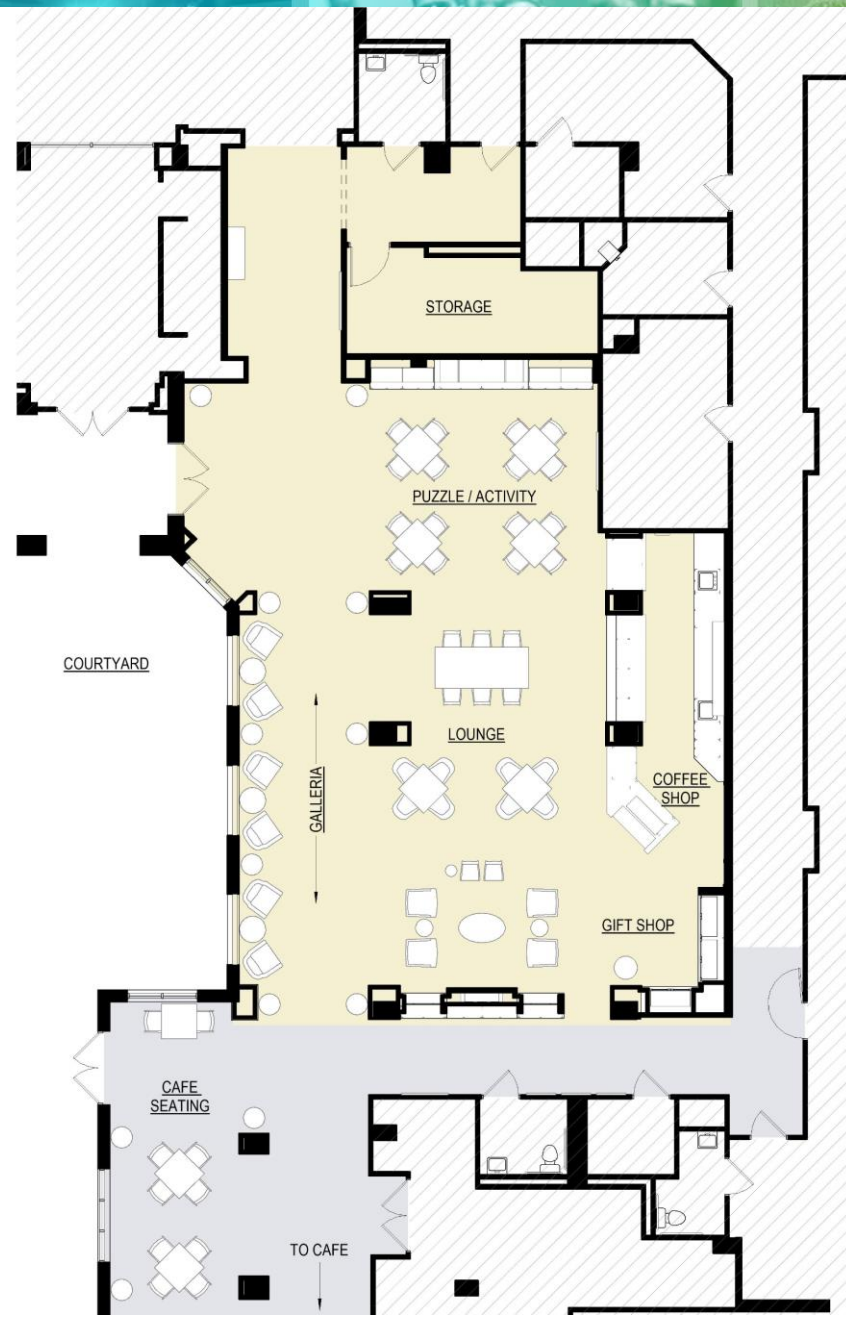
The former floor plan limited how residents could use the game room and resource center and restricted the amount of daylight entering the spaces.

Floor Plan (After)



LEGEND

-  RENOVATED SPACE
-  NEW FINISHES ONLY
-  NOT IN CONTRACT



The design team transformed two enclosed rooms and the surrounding area into an open-concept bistro with an integrated gift shop and activity space.



Before



Residents used the former retail space as a game room. Photograph by the firm.

After



The activity space is now integrated into the new cafe and features custom millwork for puzzle and game storage.
Photograph by Peter McCullough.

Before



A view of the former resource center and puzzle room. Photograph by the firm.



After



A view of the new cafe with lounge seating and a gift shop. Photograph by Peter McCullough.

Before



A view of the existing galleria corridor, with the courtyard on the left and former resource center and game room on the right. Photograph by the firm.

After



The renovated galleria corridor opens to the cafe and puzzle area and overlooks the courtyard.
Photograph by Peter McCullough.

Team Narrative:

The renovated galleria at the Garlands of Barrington offers new communal spaces and opportunities for residents to host their families. In partnership with the community's leaders, the design team transformed two enclosed rooms and the surrounding area into an open-concept bistro with an integrated gift shop and activity space.

Project Objectives

The galleria responds to resident expectations and operational requirements with elegance and efficiency. The project's key features include:

- A coffee bar and gift shop with custom millwork and display for a single point-of-sale
- New flooring throughout the galleria, including detailed mosaics and zero threshold transitions
- Perforated wood beams and soft finishes for acoustic control
- Custom millwork for large format game and puzzle storage

The galleria's French Bistro influence complements the campus's Arts and Crafts design aesthetic while adopting a more modernist identity. The space features detailed tile installations, tin ceiling panels, antique mirrors, historical-inspired mosaics and custom stained-glass windows. This refreshed interior design language extends into the adjacent cafe seating and passageway.

Improved Functionality + Operational Performance

The design improves functionality and operational performance by:

- Creating more open spaces, nurturing impromptu encounters and building a sense of community
- Right-sizing the gift shop and combining it with the bistro to streamline staffing
- Optimizing storage for activities and puzzles

The galleria's floor was another significant improvement. The previous floor used pattern and color to define areas, but its high gloss finish caused glare and was a tripping concern for residents. The colors were also overwhelming and didn't work well with the overall style of the campus. The new LVT floor mimics wood and stone to visually integrate with the renovated and existing design schemes. The matte finish and zero threshold transitions improve resident safety and is a wax-free, low-maintenance, easy-to-clean surface.

Jury Comments:

- Took such dated spaces and breathed new life into them and did it in a way that honors traditional elements - it feels fresh and bright, rather than dark and heavy. It seems like a space that many residents would gravitate towards as it feels comfortable and refined. Not too “hospitality” or over the top, but also not dated as soon as it's done.
- This project is done very well. The space is concise to the intent of the award. The outcome is in concert with coordination between design and operations. Very well done!
- This project is a well-done transformation of space which required a vision to open up the rooms and detailed consideration to integrate the hallway into the plan. The care in listening to the residents is important and the end product looks amazing.
- Beautiful high-end finishes, comfortable space, and open plan creates a center of activity. Collaboration with staff and residents to ensure accommodation of all intended use is commendable.
- The new cafe, along with lounge seating and a gift shop, is an excellent space for natural conversation to occur. The aroma emanating from the cafe enhances the overall atmosphere. The recently renovated galleria corridor is welcoming and serves as a link between the cafe and the puzzle area. The adjacent courtyard offers natural light and beautiful views of the galleria corridor. Altogether, this newly designed galleria corridor provides an ideal setting for residents to engage with their families and friends.
- Great incorporation of the residents and staff in the planning and design of their new space. A wonderful example of modernizing a space while keeping the original aesthetic of the remaining community. This is a space that seems as functional as it is beautiful due to great design planning and execution.



Community Name:

RiverWalk by Riverspring Living

RiverWalk by RiverSpring Living – Bar & Restaurant
[Riverdale, N.Y.]

Submitted by: **MDP | Merlino Design Partnership, Inc.** [Gulph Mills, Pa.]

- Single Space Brief Description: **Bar & Restaurant**
- City, State: **Riverdale, New York**
- Total renovation cost: **\$962,500 (projected cost)**
- Cost per square foot: **\$175 (projected cost)**
- Residents Served: **Independent Living**
- Completion Date: **On the Boards/In Progress**
- Presenter: **Christine Kepko, Associate**



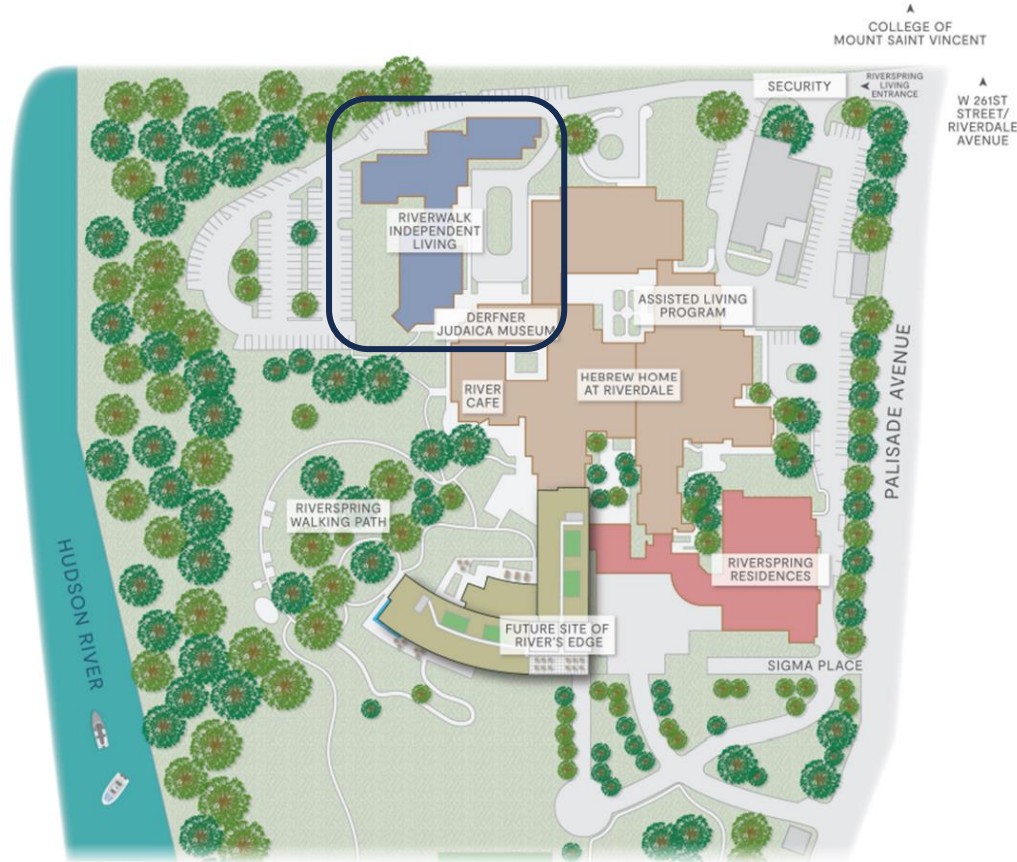
Photo: Zapir Visualizations, LLC

Campus



- Independent Living
- Assisted Living
- Memory Support
- Long Term Care
- Short Term Rehab
- Adult Daycare

- Proposed new Life Plan Community



RiverWalk Repositioning



Photo: Zapir Visualizations, LLC

Floor Plan (before)

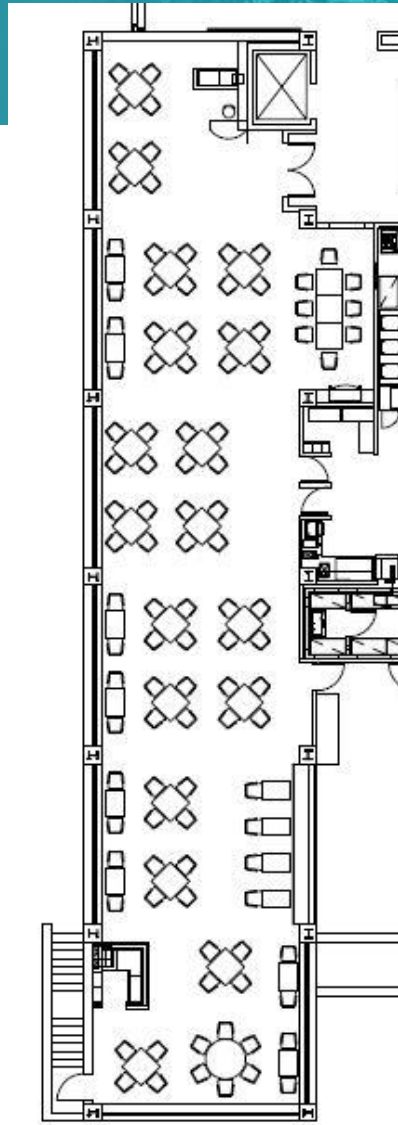
The design evolution at RiverWalk has evolved the floor plan to enhance resident life at each iteration—from the first dining renovation in 2004 to the expansion in 2012.



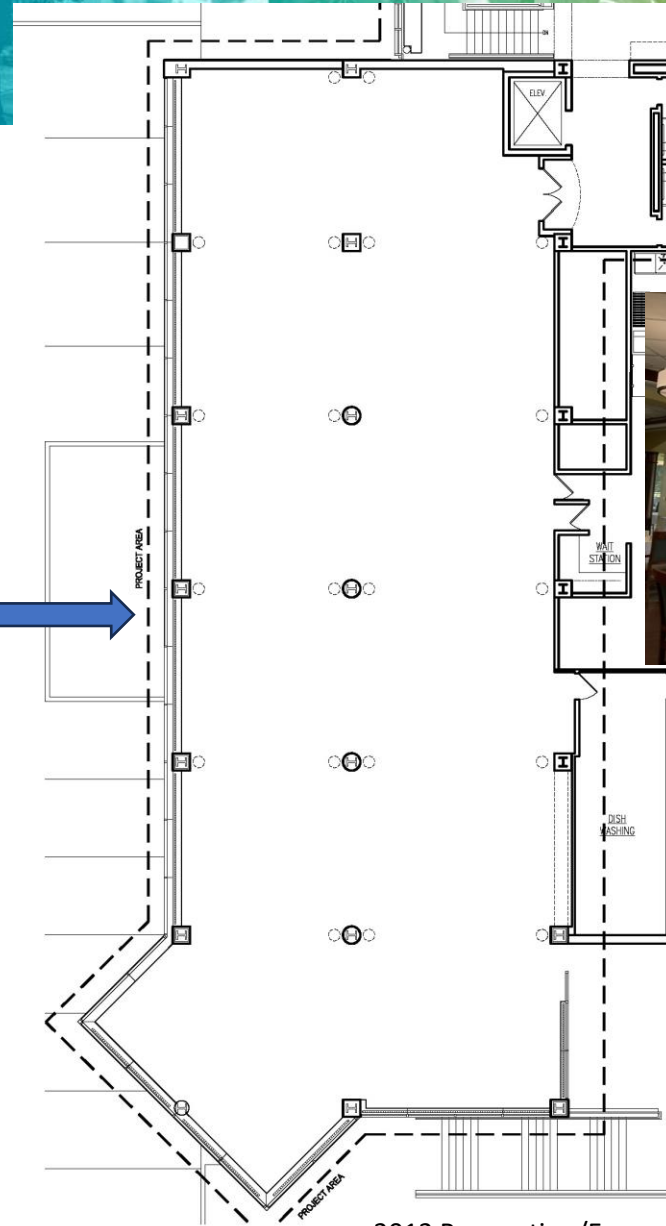
Pre-2000



2004 Renovation



2004 Renovation Floor Plan



2012 Renovation/Expansion
Floor Plan

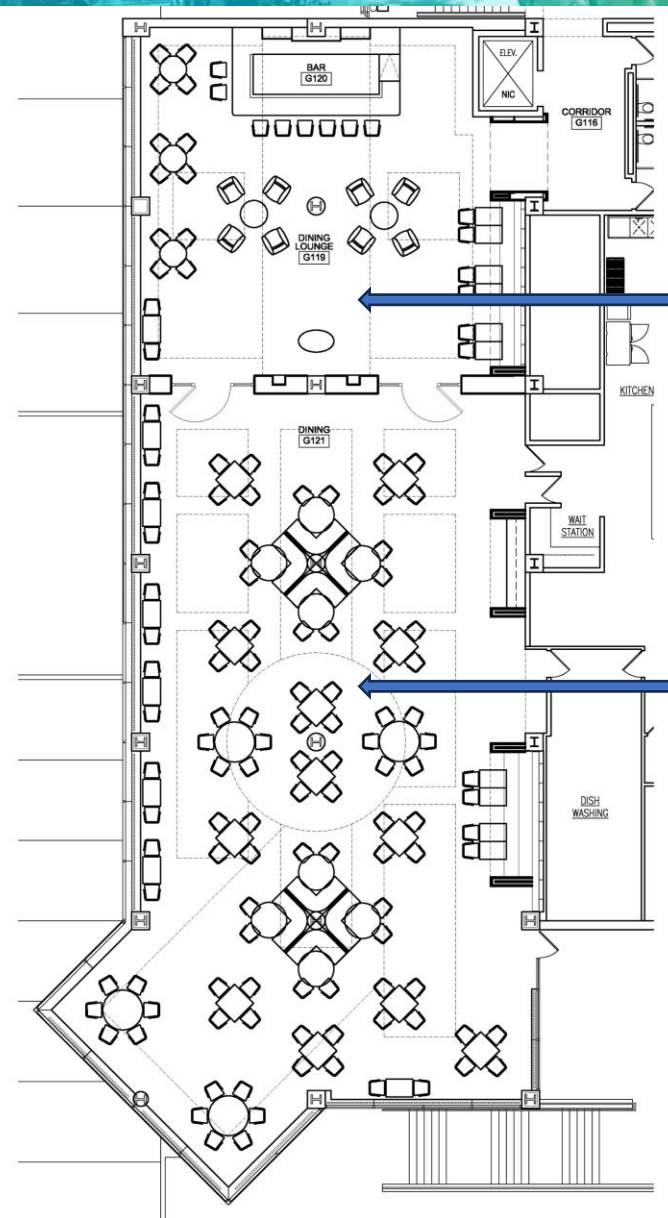


2012 Expansion



Floor Plan (after)

The one large dining venue is being transformed into two distinctly branded destinations. Sail is an upscale restaurant setting and Hudson Lounge is a multifunctional bar space that is intended to be the new hub of social activity at RiverWalk.

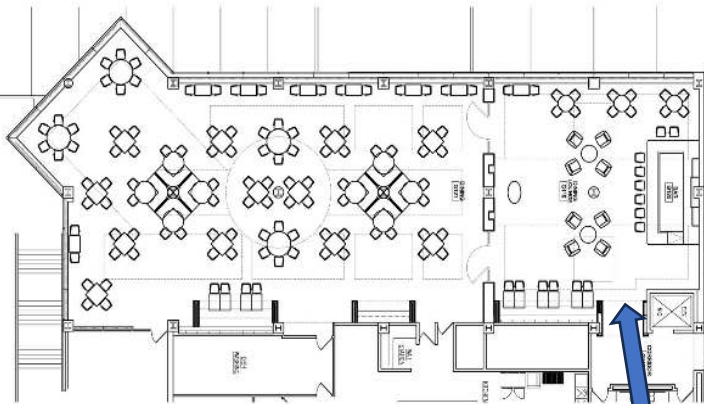


HudsonBar

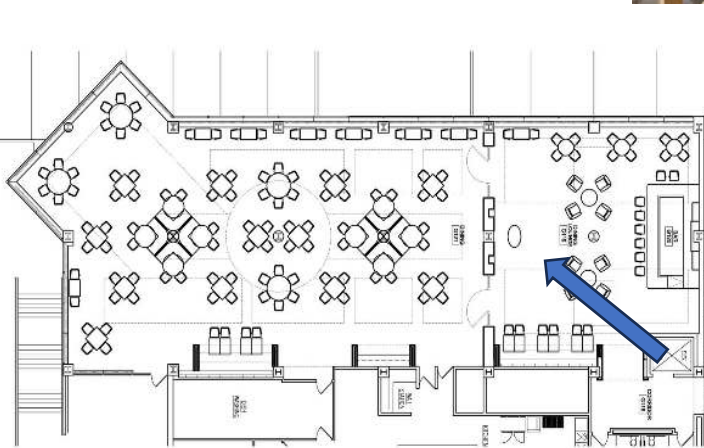
Sail Restaurant

The Veranda
(Future)

After



After

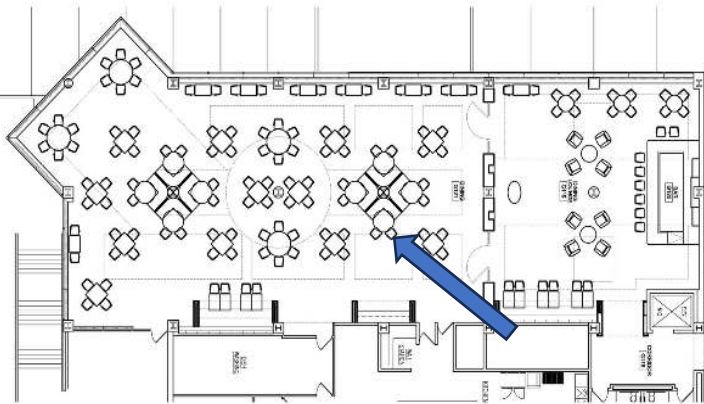


The design transforms the one large dining venue into two distinctly branded destinations, including Sail, an upscale restaurant setting.

Photo: Zapir Visualizations, LLC

#EFAcon

After



The design evokes a luxurious Manhattan hotel lobby feel and NYC bar vibe to rival the spectacular views.

Photo: Zapir Visualizations, LLC

#EFAcon

Team Narrative:

Forward-thinking senior living providers have a “what’s next” mindset for their campus. This can translate into renovating the same building from one decade to the next in order to stay competitive in the market. Hebrew Home at Riverdale by RiverSpring Living “has helped its residents live the fullest lives they can” for over 100 years. The design firm has worked with the leadership team to revitalize the New York campus for the past 22 years. This includes a series of renovations at RiverWalk.

The design evolution at RiverWalk has elevated resident life at each iteration since the first project in 2000 when the building was transformed into a modern independent living residence. The goal of the 2023 project is to revitalize the building into an upscale market-rate community in line with the development of a new CCRC on campus. This includes redefining the amenities program and design aesthetic to complement the other campus offerings.

The design team collaborated with Riverspring leadership to gather staff input. The results of a resident survey administered by Riverspring were also shared with the design team. High-quality renderings are displayed on-site to garner excitement from residents and families.

The concept infuses new life and a hospitality appeal into existing amenity spaces, enhancing every aspect of the resident experience. From the lobby and dining areas to an enticing multifunctional lower level—the design reinforces “freedom and friendship.”

Over the years, the dining area received multiple finish updates and in 2012 the space was widened. The 2023 renovation of this area evokes a luxurious Manhattan hotel lobby feel and NYC bar vibe. The design transforms the one large dining venue into two distinctly branded destinations. Sail is an upscale restaurant setting and Hudson Lounge is a multifunctional bar space that is intended to be the new hub of social activity at RiverWalk. Instead of gathering off the main entry and interrupting the traffic flow of the lobby, residents can enjoy a true lounge experience with stunning views. This space provides an area to enjoy a cup of coffee while reading the newspaper, conversations with friends throughout the day, and a spot for celebrating or having a pre-dinner happy hour.

Existing classic finishes and earth tones are amped up with a sophisticated palette of jewel tones and gold accents. Striking flooring and ceiling details reinforce the refined design and define each space with views directed to the spectacular Hudson River setting. Sleek surfaces are juxtaposed with textural applications to create visual interest in each space. Wood, metal, and saturated color are introduced in herringbone patterns, decorative screens, signature light fixtures, and accent walls throughout the renovated areas.

The revamped layout improves operational efficiencies for staff. In addition, new technology being integrated into the community will infuse a concierge lifestyle. This technology will help manage the dining venues and support ordering, reservations, and takeout/delivery options.

Jury Comments:

- From the design flow, to bringing the outdoors in - matching ambiance of the culture inside and outside the community - and the individualized branding of the spaces, this submission was well done, and the renovation was clearly well thought through. Big impact for not a huge budget.
- This transformation was truly stunning. Recreated the whole feel of the dining space and gave it more of a defined purpose and a feel that meets the culture. Made this space efficient for staff and visitors alike.
- Love the way the long linear space is broken up with the accented columns and ceiling treatments, and how it all translates into the seating arrangement. Good branding and signage help to reinforce this as a signature destination with a strong sense of arrival.
- Beautiful light fixtures with effective lighting highlights are used throughout the space. A very elegant and beautiful transformation of the old dining space with a lot of visual interest.
- Really classy. Looks like it fits in New York. Very open and spacious. Takes full advantage of the outdoor views. I might have scored higher if I could have seen the completed space.
- The thoughtful planning for how a property needs to evolve over the decades is most impressive. The design from one decade to the next continued to enhance the living experience for the residence and the prioritization of the inside and outside living/benefits.
- Such a unique perspective to be able to consistently work with the client on the dining room updates throughout the years. This iteration takes the space to a new level that rivals any fine dining restaurant. Giving the resident a choice in seating and different venues and capitalizing on the windows and views were an excellent design consideration.



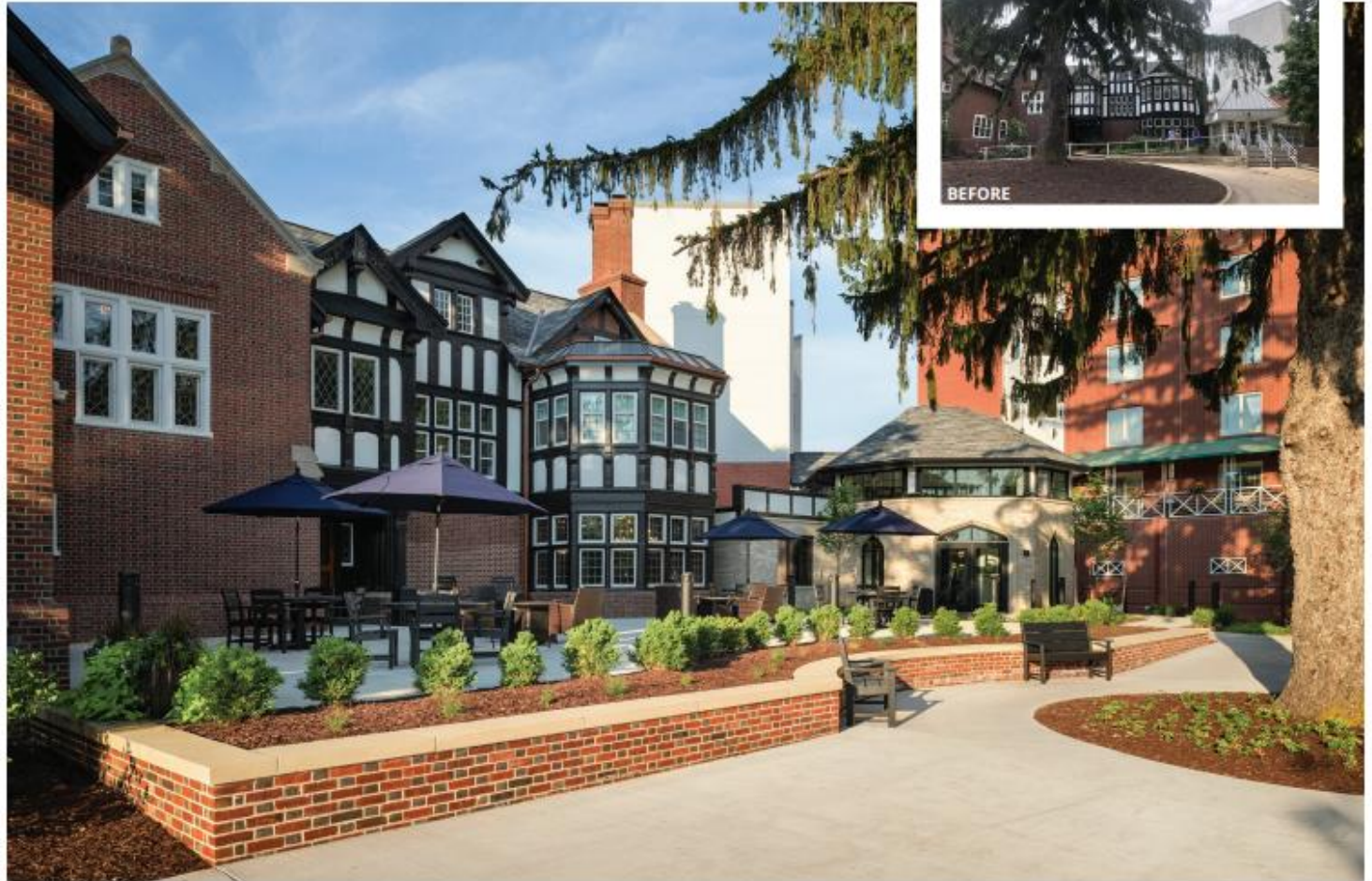
Community Name:

Wesley on Grand

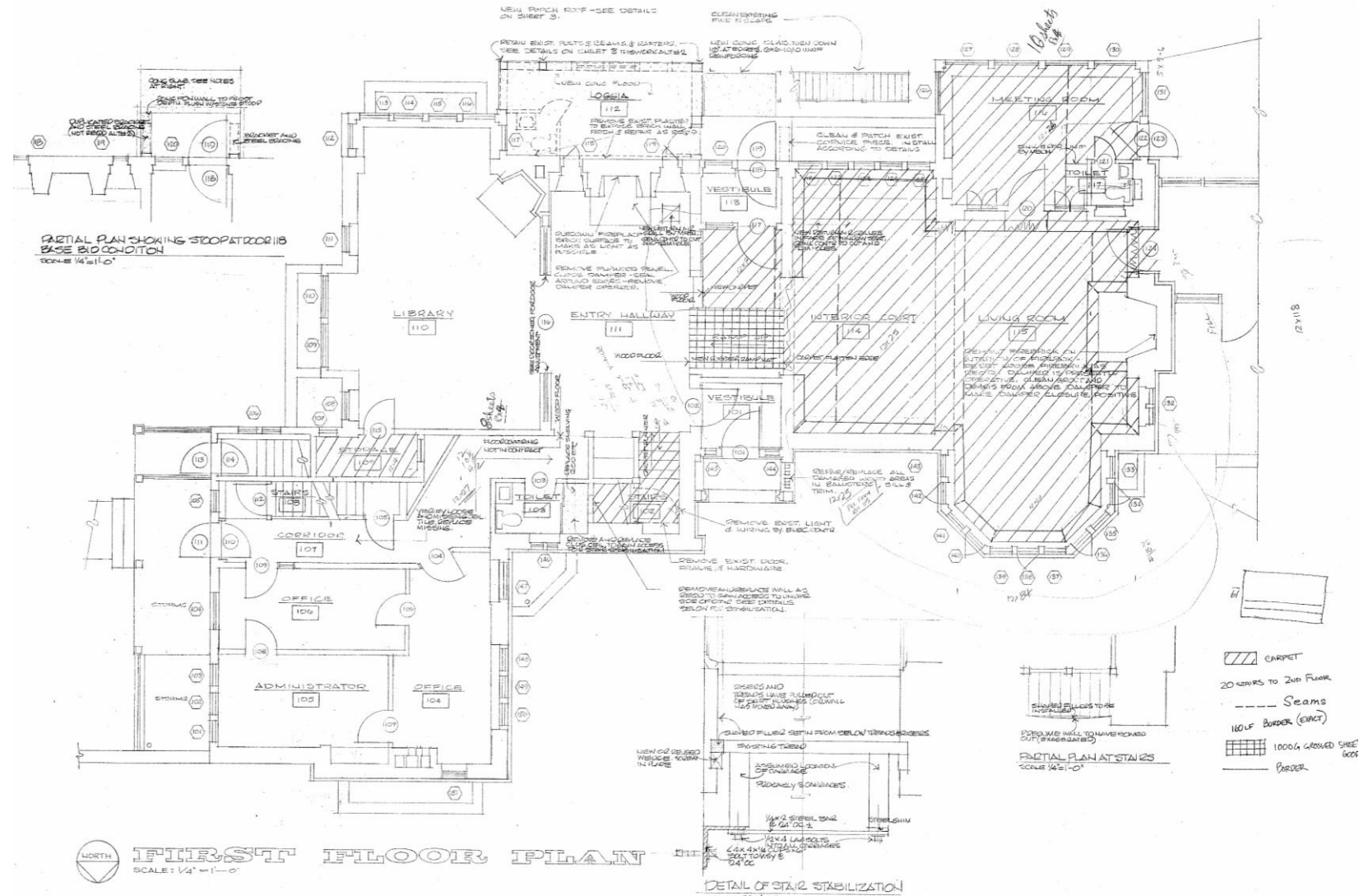
- Single Space Brief Description: **Chamberlain Main Floor Fireside**
- City, State: **Des Moines, Iowa**
- Total renovation cost: **\$1,211,040**
(does not include landscape)
- Cost per square foot: **\$154/SF**
- Residents Served: **282**
Independent Living Residents,
plus this area is also open to the general public
- Completion Date: **January 2023**
- Presenter: **Emily Weber, Senior Interior Designer**

Wesley on Grand, Chamberlain Main Floor Fireside
[Des Moines, Iowa]

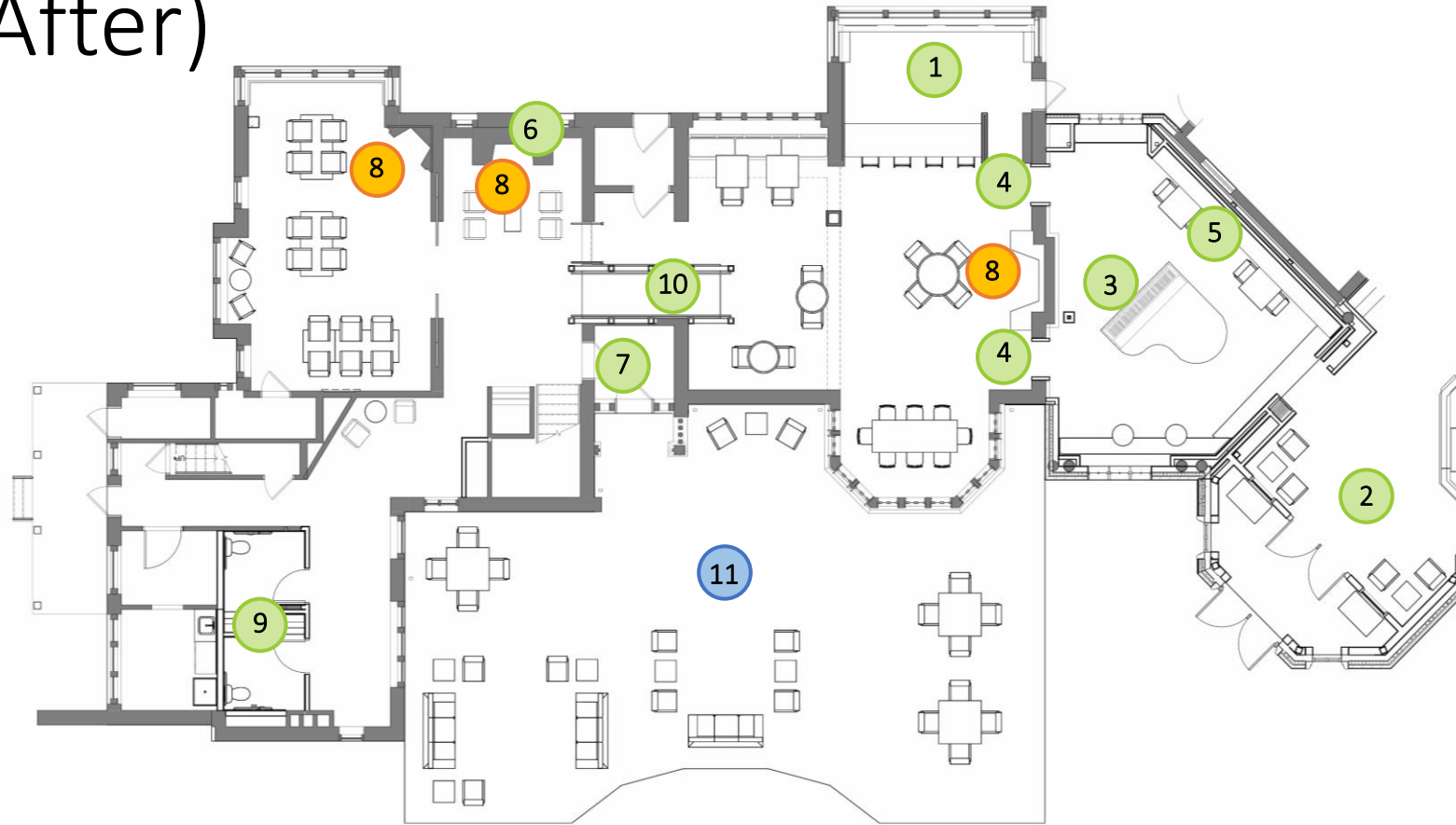
Submitted by: **Pope Design Group** [St. Paul, Minn.]



Floor Plan (Before)



Floor Plan (After)



1. New commercial bar
2. New main entrance extends building to create a first impression into the Chamberlain's Main Floor Fireside
3. Former main entrance reception area transformed into piano room
4. New entry points to the mansion
5. Secure liquor storage to support bar
6. Restored door hardware (throughout)
7. Restored original Chamberlain Mansion exterior door for access to Terrace and outdoor gardens
8. Restored woodburning fireplaces
9. New ADA unisex bathrooms (designed to fit the design of the mansion)
10. Added ramp to improve transitions in Main Floor Fireside's existing level changes
11. New terrace and outdoor seating extends pub environment & enhances outdoor impression

The renovated Main Floor Plan of historic Chamberlain Mansion with highlights to key project features.

Before



Chamberlain Mansion and fireside exterior with existing main entrance on the right.

After

Chamberlain
Mansion exterior
showing new
terrace and new
main entrance to
the Main Floor
Fireside.



RESTORED MANSION
ENTRANCE now creates a
secondary terrace access
for Main Floor Fireside

NEW GRAND ENTRANCE
to the fireside space that
is a visual anchor next to
the Chamberlain, creating
a stronger destination

LANDSCAPING, GRADING
AND A NEW TERRACE greet
visitors and connect the
Fireside space and new pub
to the community



Before



ORIGINAL DOOR AND WOODWORK FRAMING an underutilized meeting room.

ORIGINAL FIREPLACE #1 of 3 that was not in use because the space did not meet code.

EXISTING ENTRANCE to Main Floor Fireside which sat awkwardly behind the existing main entrance reception desk.



After



WOODWORK WAS REMOVED opening the unused space for a new commercial bar. (see next slide for more detail)

ADDED NEW OPENINGS connecting to an adjacent piano room. These were intricately designed and built to match the mansion's rich character.

RESTORED FIREPLACE #1 of 3, which included fixing the flue, adding a firewall and new roof structure. This fireplace now adds to the ambiance of the space.



Before



ORIGINAL DOOR AND WOODWORK FRAMING an underutilized meeting room.

EXISTING SINGLE POINT OF ENTRY into the Chamberlain Main Floor, which was behind the entrance's reception desk.

View of existing meeting room area in the Chamberlain Mansion's main floor, showing a neglected and underutilized space.



RESTORATION



NEW USE

WOODWORK was carefully removed, meticulously numbered, cleaned, restored and reassembled as an interior entrance to the community's meditation room.

After



WOODWORK WAS REMOVED opening the unused space for a new commercial bar. This creates a visually connected entertaining space and invites daylight from the original windows into the fireside core.

COLUMNS were added to help with structural support of the 3-story space above. Existing woodwork beams were restored including veneer replacements as needed.

RESTORED FIREPLACE #1 of 3, which included fixing the flue, adding a firewall and new roof structure. This fireplace now adds to the ambiance of the space.

Team Narrative:

To revitalize WesleyLife's flagship community in Des Moines, Iowa, the organization embarked on a project to reposition the campus with new wellness and community amenities. This included preserving and transforming the cornerstone of the community, the D.S. Chamberlain Mansion. Built in 1904 and on the National Historic Register, the Chamberlain Mansion became WesleyLife's first home for aging adults in 1949. After 70 years of use, the home was in disrepair and not fulfilling its potential. There were structural issues, no modernized HVAC system, peeling ceilings from humidity issues, and an inaccessible footprint with a challenging layout for a public space.

The goal of the project was to preserve the mansion's original integrity and character while elevating its function and community use to fit the campus-wide repositioning effort. The mansion is completely renovated, yet it preserves the original architectural intent and impression of the 1904 home. A new HVAC system was installed in the basement with new ductwork throughout, structural and ceiling beams were straightened or removed where needed, every single piece of hardware and hinge was removed, cleaned and restored, each piece of woodwork was preserved, ADA requirements were fulfilled, and commercial food service was introduced into the space.

The Main Floor Fireside area now features the Chamberlain Mansion Pub designed to transform historic, underutilized rooms into a lively, full-service bar and restaurant. This Fireside area features flexible spaces for events, artist in residence installations, live music and cocktail hours. The bar is designed to connect three of the existing rooms on the main floor. It has a full liquor license, and the bar back has a TurboChef pizza oven where that are freshly prepared by chefs in the community's commercial kitchen can then be heated and served in the pub. An adjacent room hosts weekly performances by world renowned pianist Dan Knight.

WesleyLife aimed to welcome in the surrounding community and enhance life for residents. Through the renovation and preservation process, the mansion went from a stagnant, stuffy old historic house that was out of commission, to a community hub that is full of energy and vitality, inviting residents and the public to visit, dine, grab a drink, make a connection. The revitalized Chamberlain Mansion and Fireside creates a welcoming destination for the entire Des Moines community.

Jury Comments:

- I love that they were able to refurbish key components of the building and repurpose them. Residents and staff fall in love with the history of buildings and their amenities, so to be able to keep pieces and give them new life is great. Opening up and being part of the greater community is an asset to your location. Beautiful remodel.
- Great job utilizing the existing character, wood finishes, and details to define the new space - tasteful but not over designed. The addition of the bar brings a much greater sense of purpose to the overall space, as does the increased natural light, and I'm sure both will help promote more resident engagement.
- A true building rehabilitation. The new exterior Grand Entrance complements the historic mansion, replacing a previous addition which was outdated while perfectly preserving and enhancing the grounds and approach to the building. The interior restoration is outstanding with the laborious removal and refinishing of the woodwork.
- The goal of the project was to preserve the mansion's original character while elevating its function and community use. The design has accomplished this project goal. The old mansion has been transformed into a community hub that serves the entire Des Moines community. It's like a magnet that attracts different people to get together and have fun. I love the fact this is a historic renovation that repurposed a lot of old woodwork, but brings the project into the 21st century with amenities today's residents want, like the pub. The façade of the building maintains a historic feel, but the updated terrace and seating area blends well and is much more functional. The historical restoration is outstanding and stunning. The landscape redesign and enhancing of the entry is simply beautiful and very welcoming. Once inside, the updates, even with maintaining the dark original wood, lighting and removal of carpet really enhanced the architecture.

Environments for Aging is pleased to announce our 16th Annual Remodel/Renovation Competition!

- Submissions will focus on single spaces, including dining spaces, lounges/activity areas, lobbies, and other resident spaces.
- Winners will receive special recognition at our annual Environments for Aging Conference + Expo (Spring 2025), and bonus coverage of their projects in the Fall 2024 issue of Environments for Aging.
- In addition, all participating firms will be included in a Remodel/Renovation Gallery, also appearing in the Winter 2023 issue, with a quarter-page feature of their project, allowing readers an opportunity to view all of the competition entries.
- **Entry Fee per Submission: \$735**
- **Reservations due June 5; Presentations due June 26th**
- **New in 2024:** In addition to completed projects, EFA is now accepting projects in progress and unbuilt/conceptual designs.
- Submission must include quality renderings.

For more information about this program, contact Donna Hidalgo:
donna.hidalgo@emeraldtx.com; 210.419.9017

environments
for aging

**16TH ANNUAL REMODEL/
RENOVATION COMPETITION
CALL FOR
SUBMISSIONS**



If your organization or firm has recently renovated space(s) within a senior living community, this competition is for you!

The top three projects will receive Gold, Silver, and Bronze awards. All projects will be published* in the Fall 2024 print and online editions. Award recipients will be honored at the 2025 Environments for Aging Conference + Expo.



RESERVATIONS DUE: JUNE 5

PRESENTATIONS DUE: JUNE 26

Entry fee: \$735 per submission

Entries must detail the renovation of a single space, which may be any area within a senior living community, such as dining areas, resident rooms, activity zones, spas, chapels, theaters, and more.

New in 2024: In addition to completed projects, EFA is now accepting projects in progress and unbuilt/conceptual designs. Submission must include quality renderings.

LEARN MORE: efamagazine.com/renovate

CONTACT: Donna Hidalgo at 210.419.9017 or donna.hidalgo@emeraldtx.com

* All projects will be featured in a Remodel/Renovation Gallery, also appearing in the Fall 2024 issue, with a quarter-page project description and photos allowing readers an opportunity to view all of the competition entries. Award-winning projects will be upgraded to a full page or spread.

2023 Best Winner: *Wishy or Grand, Charleston Main Floor Private (See/Write) Issue*, submitted by Pope Design Group. Photo: Peter Johnson Studio

TIPS FOR A GREAT SUBMISSION:

- Provide a legible floorplan
- Include great pictures – use the images to support your narrative and provide captions
 - **BEFORE** – make sure images directly relate to the improved area and their changes
 - **AFTER** – look for the “wow” factor and/or the design link, to the program
- Define “the difference maker” and the impact on residents
- Offer how the operator has benefitted from the improved design
- Submit a dynamic narrative written by a project team member(S)



Wesley on Grand, Chamberlain Main Floor Fireside [Des Moines, Iowa]

Submitted by: **Pope Design Group** [St. Paul, Minn.]



AIA Continuing Education Provider

This concludes The American Institute of Architects
Continuing Education Systems Course





Moderator/Jury Representative

Lisa Warnock, Principal
Glow Interior Designs, LLC
(Portland, OR)
lisa@glowinteriordesigns.com



Emily



Christine



Karen

Bronze Winner:

The Garlands of Barrington, The Galleria (Barrington, Ill.)
Submitted by: Eppstein Uhen Architects, Inc.
Representative: *Karen Davis*, Senior Interior Designer
karend@eua.com

Silver Winner:

RiverWalk by RiverSpring Living, Bar & Restaurant (Riverdale, N.Y.)
Submitted by: Merlino Design Partnership, Inc.
Representative: *Christine Kepko*, Associate
christine@MDPDesign.com

Gold Winner:

Wesley on Grand, Chamberlain Main Floor Fireside (Des Moines, IA)
Submitted by: Pope Design Group
Representative: *Emily Weber*, Senior Interior Designer
eweber@popedesign.com

Thank you for joining us today!

Please complete the survey.



Society for the Advancement of
Gerontological Environments