

**Environments for
Aging's Remodel /
Renovation Competition:
A Review of the 2022
Winners**

*Presented by Ric D'Amico, Darla Esnard,
Tom Dillenbeck, and Andrew Carle*



Society for the Advancement of
Gerontological Environments

Presenters:



Darla Esnard
Principal
Ankrom Moisan

Tom Dillenbeck, AIA
Sr. Vice President
Hobbs + Black
Architects

Andrew Carle
President
Carle Consulting

Ric D'Amico
Sr. VP, Real Estate
Dev/Svcs
Acts Retirement Life
Communities

SAGE is all about education, it is at the core of what we do. We bring the latest knowledge and developments to you from all aspects of senior living design.

SAGEfederation.org



You will be muted during this webinar.

This webinar is being recorded, and a link to the recording will be emailed to all registrants within two business days.

AIA Continuing Education Provider

AIA Provider Number: 502111285

EFA Remodel/Renovation Competition: A Review of the 2022 Winners

SAGE0723

Presented by Ric D'Amico, Darla Esnard, Tom Dillenbeck, and Andrew Carle
7/13/23

This program is AIA-approved for 1 Learning Unit (LU)



AIA Continuing Education Provider

Credit(s) earned on completion of this course will be reported to [AIA CES](#) for AIA members. Certificates of Completion for both AIA members and non-AIA members are available upon request.

This course is registered with [AIA CES](#) for continuing professional education. As such, it does not include content that may be deemed or construed to be an approval or endorsement by the AIA of any material of construction or any method or manner of handling, using, distributing, or dealing in any material or product.

Questions related to specific materials, methods, and services will be addressed at the conclusion of this presentation.

This presentation is protected by US and International Copyright laws. Reproduction, distribution, display and use of the presentation without written permission of the speaker is prohibited.

© SAGE 2023



Course Description:

Environments for Aging magazine's annual Remodel/Renovation Competition sheds light on projects that have noteworthy aspects to inspire future renovation projects, big or small. This presentation brings together winners from the 2022 competition to explore their specific projects and how they approached their unique environments to create more meaningful settings. Attendees will walk away with a thorough understanding of what types of challenges emerge during remodels and renovations and how these proven project teams addressed those challenges. Attendees will also learn about the competition submission process and key elements to include in future submissions.



Learning Objectives:

- Learn about renovation projects ranging in size, scope, and costs for a variety of older adult settings.
- Learn about design attributes, challenges, and solutions employed to create award-winning environments for aging.
- Understand the importance of including operational factors in the design process and how operators are positively impacting quality of life for residents, families, and staff.
- Gain insights into the design award submission, review, and award process.





The 2022 Review and Selection Process

Recognizing High Standards of Excellence



2022 Recognition:

A multidisciplinary panel of experts reviewed the 2022 submissions and determined the Gold, Silver, and Bronze winners. Winners received special recognition at the 2023 Environments for Aging Expo & Conference and bonus coverage of their projects, in the Winter 2022 issue of Environments for Aging.

Congratulations to the 2022 Winners!

Gold

Shenandoah Memory Care at The Virginian – Memory Care Common Space (Fairfax, Va.), submitted by Focus Healthcare Partners

Silver

Masonic Pathways – Dining Room (Alma, Mich.), submitted by Hobbs+Black Architects

Bronze

The Meadows of Napa Valley – Dining Room (Napa, Calif.), submitted by Ankrom Moisan Associated Architects Inc.

For more information about the 2022 Winners visit the EFA Magazine website. We will send out a link in the coming days, along with a link to the webinar recording.

THANK YOU TO OUR 2022 REMODEL/RENOVATION COMPETITION JURY

Sharon Behan Breitinger, president, Navitect Consulting
Roger Beins, chief operating officer, Menno Haven Retirement Communities
Amy Carpenter, principal, SFCS Architects
Scott Courtney, senior healthcare planner, SSOE Inc.
Joan Devine, independent consultant
Jennifer Fleming, owner and principal, interior designer, Rice Fergus Miller Architecture
Leticia Fornataro, principal, architect, SWBR
Lorraine Hiatt, PhD, environmental gerontologist, ImprovAging Lifestyles and Design
Meghan Kolund, design director, Wegman Design Group
Libby Laguta, principal, L2D.Design LLC
Dinah Martin Kmetz, executive director, project management, Saint Therese
Alicia Nicolay, director of design, Spellman Brady & Company
Deborah Seitz, principal, Lenhardt Rodgers Architecture + Interiors
Tiffany Tello, healthcare administrator, Querencia at Barton Creek
Teresa Whittington, owner, operator, Teresa's House

The multi-disciplinary panel of jurors represents various backgrounds and experience and includes Providers, Academics, Architects, Interior Designers, Researchers, and Regulators.

Thank you!



2022 Project Submittal and Review Notes:

- 27 Projects Reviewed by 15 Jurors made up of Senior Living Providers, Architects, Interior Designers, and Industry Consultants.
- **Round I:** The projects were split between two groups of jurors to narrow down the projects to the top 8.
- **Round II:** The top 8 were further reviewed and the top 3 were named Gold, Silver and Bronze award winners.
- All 3 winning projects are represented here today and received editorial coverage of their projects, in the Winter 2022 issue of the Environments for Aging magazine.

Interested in serving as a Juror for the 15th Annual 2023 EFA Remodel / Renovation Competition? Visit:

https://app.smartsheet.com/b/form/a5f469d6648c406a8c6eb_a47a2c9f9ed

We will send this link out to all webinar registrants.



environments
for aging

winter 2022 | efamagazine.com



**Making the
connection**

Rose Villa, Portland, Ore.



2022 Remodel/Renovation
Competition

The 14th Annual, 2022 Award Winners

Projects and Teams

- The Meadows of Napa Valley
- Dining Room
- Napa, CA
- Total renovation cost: \$6 million for entire building renovation
- Cost per square foot: \$250

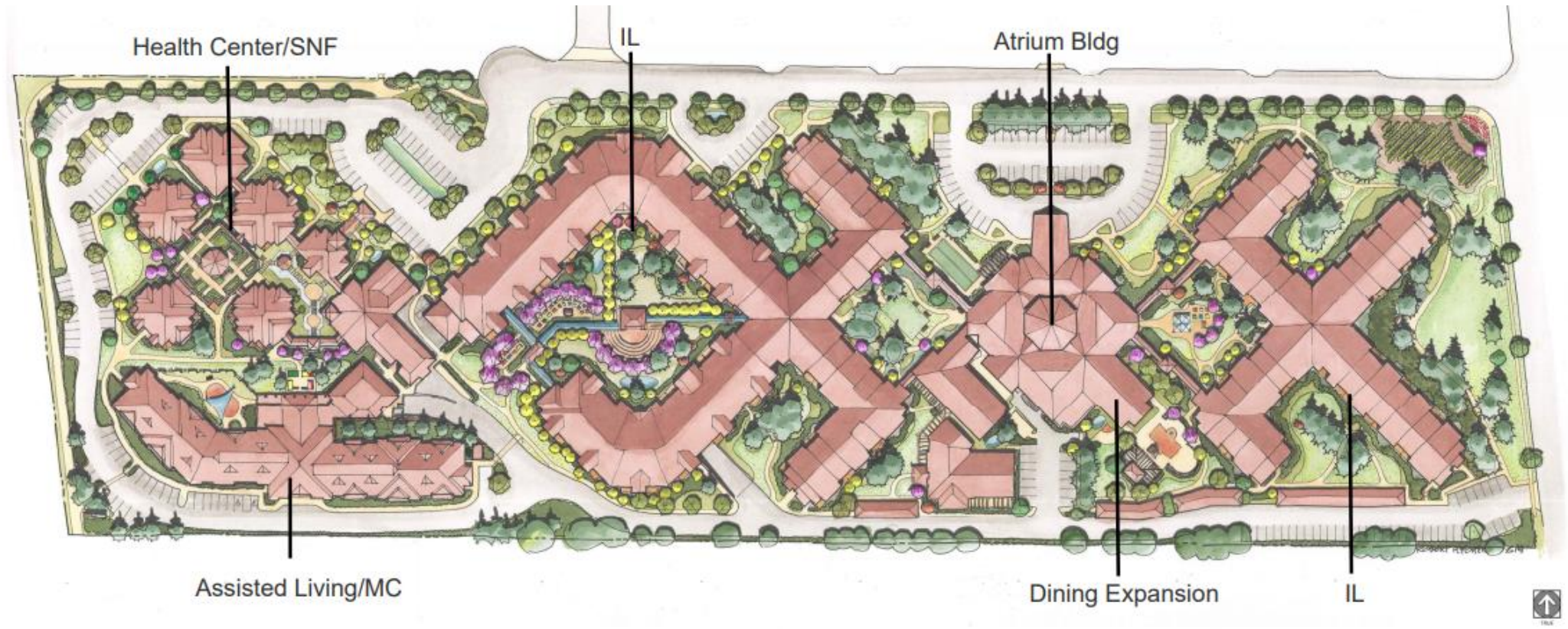
The Meadows of Napa Valley — Dining Room [Napa, Calif.]

Submitted by: **Ankrom Moisan Associated Architects Inc. [Portland, Ore.]**



Residents Served:
Independent Living,
Assisted Living, Skilled
Nursing
Completion Date:
February 2021

Site Plan



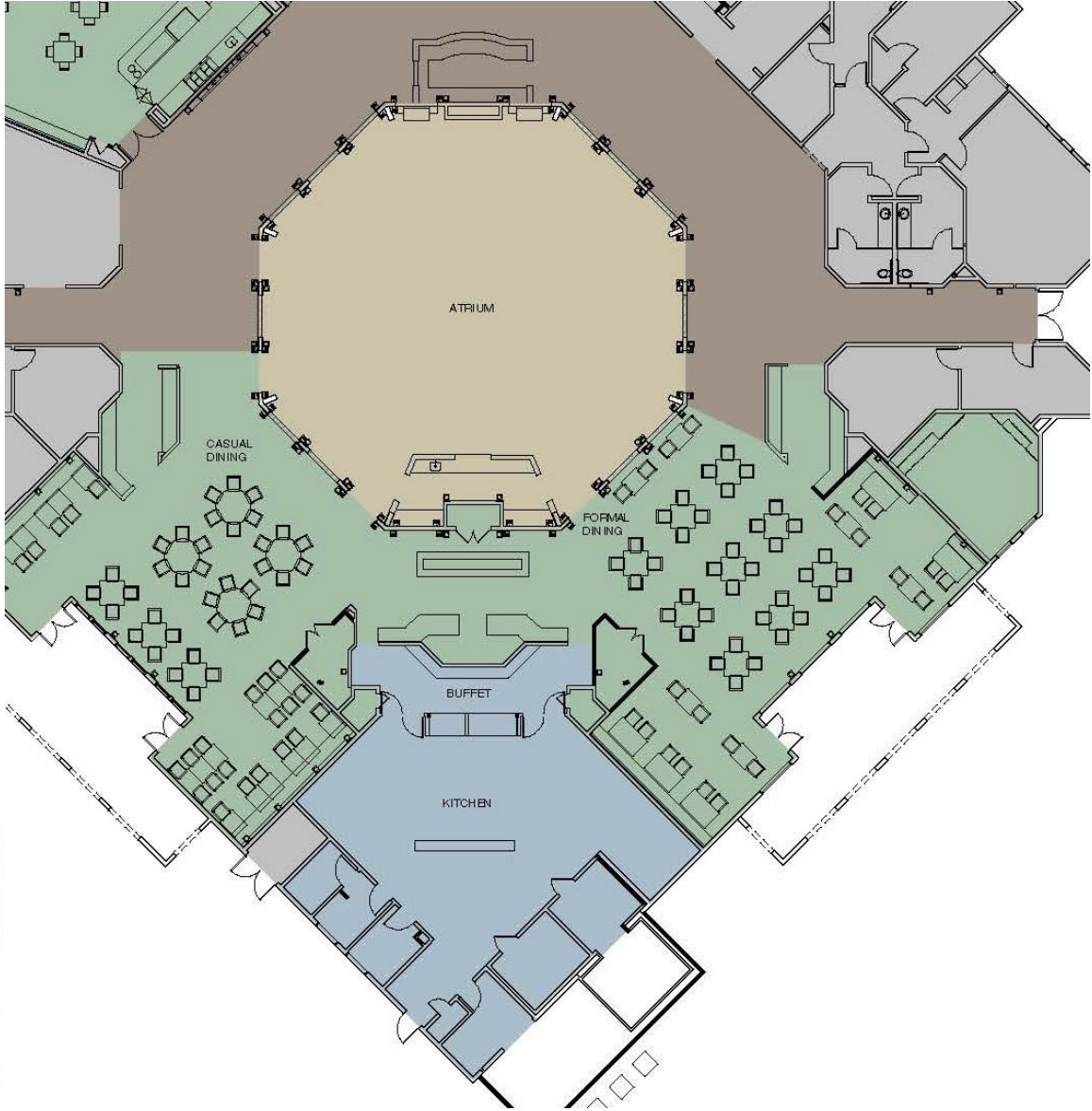
RENDERED CAMPUS MASTER PLAN



Floor Plan (Before)



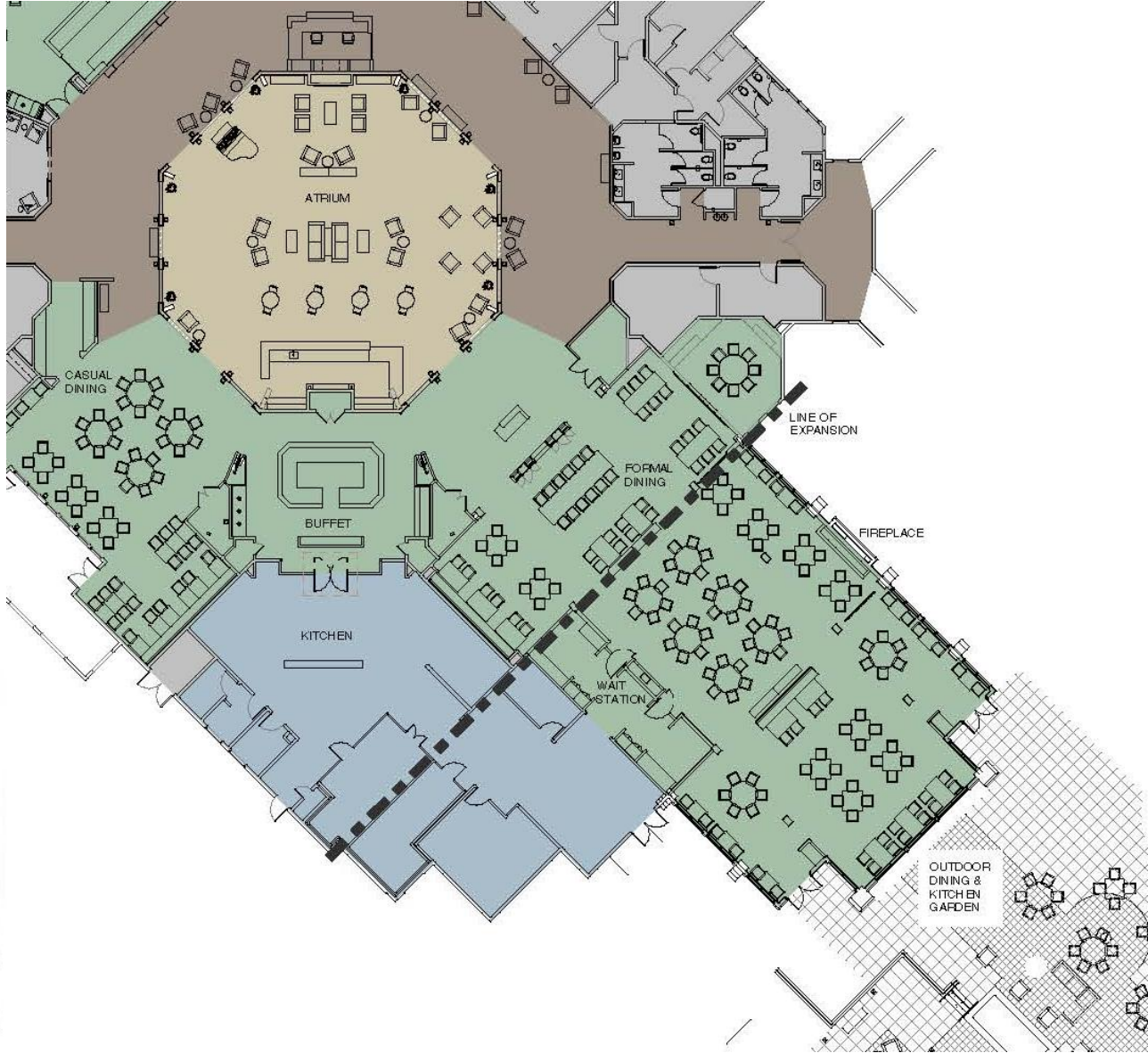
RENDERED CAMPUS MASTER PLAN



Floor Plan (After)



RENDERED CAMPUS MASTER PLAN



Before:



After:



Photo Credit: Brent Loe

Before:



After:



Photo Credit: Brent Loe

Before:



After:



Photo Credit: Brent Loe

Team Narrative:

At the heart of the Meadows of Napa campus sits the Atrium Building. It is the heart of the campus literally and physically. Connecting the main Entrance/Lobby with all of the residential apartments, Amenities and all other operational spaces.

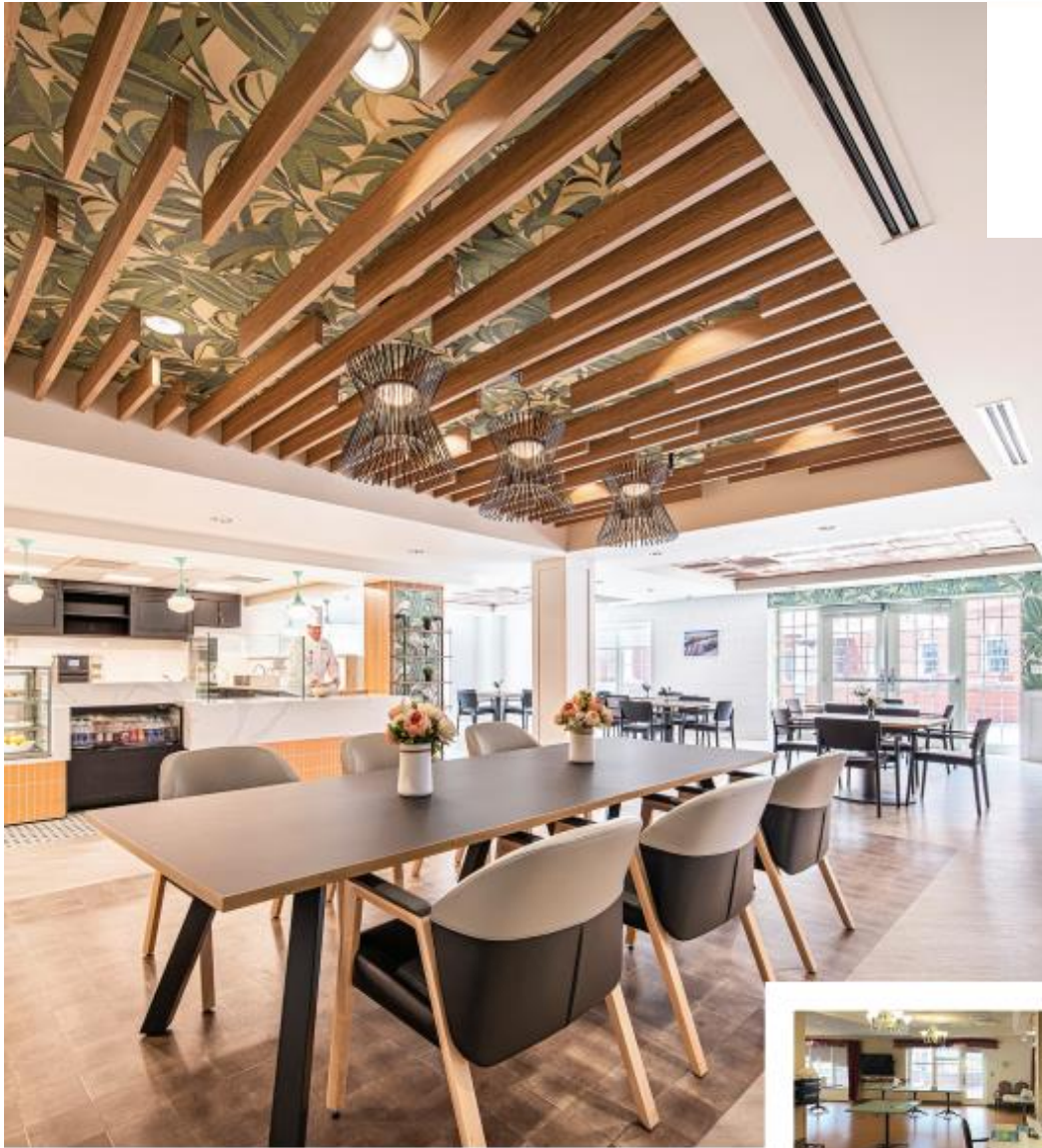
The Formal Dining Room is located centrally in this building and is one of three dining venues serving this campus. The design team was charged with creating a dining room that could easily house it' growing population, but more importantly creating a relaxed but elegant space, a better functioning space for staff and a flexible space that could be used for everything from Marketing lunches to birthday parties. Previously only seating 60 people, this remodeled space now entertains 160 and can be used as an event space. Additionally, the expanded kitchen allows for a wider range of offerings and has direct access to a new kitchen garden. This new design element has not only reinforced the idea of farm to table but has inspired resident cooking classes with the campus chefs.

This complex renovation not only included this dining venue but all amenity spaces. The Resident design committees were immersed in the design process and selections from the early stages and participated in Monthly Construction presentations on progress and schedule. Early on the campus coined the phrase "Wine Country Casual" as their mantra and design theme. The design team took this and ran with it creating interiors inspired by Napa's history and wine culture. Looking to the famous rolling hills and landscape for our color palette, we employed earth tones, neutral greens, warm browns and watery blues with hints of burnt orange, suggesting the natural textures of Napa's vineyards.

Old Maps of the region inspired custom-designed screens and hand drawn map artwork. Wine in its many forms inspired custom wine bottle pendant fixtures over the Resident Friendship table and local wine barrels used as a custom art installation are just a few of the many details in this inspired renovation. While this renovation project was long, spanning many years, multiple buildings, venues and a pandemic thrown in for good measure, it also was greatly rewarding to the team.

Jury Comments:

- The original space had such awkward architecture, and this design team transformed it into an understandable shape. The exposed custom roof trusses were a terrific and well-executed idea. The large spaces were expertly developed into separate dining spaces each with its own identity but remaining as a cohesive whole. I appreciated the resident involvement and use of local art. Integrating elements of the Napa region and the winery culture were thoughtful and terrific. There were a lot of finish materials, lighting, and FF&E that seem to be wonderfully coordinated.
- ***Incredible use of materials to provide a theme and create a reference (barrels, wine themed); great use of expanded views by enlarging openings; good expansion of not only physical space but also programming***
- Very appropriate for the region. The expansion of the dining space promoting views of the rolling hills draws the eye and is beautiful. The wood trusses and wine barrels/bottles add to the ambience as a casual, but refined space.
- ***It is ironic that The Meadows of Napa Valley has chosen a wine theme for this successful project. Its beauty will surely be appreciated by locals and Napa lovers alike. Love the application and effectiveness of the “wine country casual”. The expanded kitchen and kitchen garden complement the vineyard vibe. The wine bottle pendants are a fabulous galvanizing statement.***
- They pulled the outside environment and culture into the dining room. The décor was unique, they chose fixtures that mimicked the surrounding culture, i.e., light fixtures, wine barrels, color theme. The views were improved – again bringing the outside in. They also improved the lighting – by increasing the use of windows.
- This renovation is visually stunning especially when you compare the before and after. They get great impact with the different types of wood beams used in different areas. Some of the wine inspired design is a bit over the top for my taste and I feel the formal dining should be tucked away in the room instead of right in the middle. Without those 2 things, I would have put this one as #1.



Masonic Pathways — Dining Room [Alma, Mich.]

Submitted by: **Hobbs+Black Architects** [Ann Arbor, Mich.]

- Masonic Pathways
- Dining Room
- Alma, MI
- Total renovation cost: **\$4,900,000**
- Cost per square foot: **\$275**
- Residents Served: **Skilled Nursing/Rehabilitation**
- Completion Date: **March 2022**

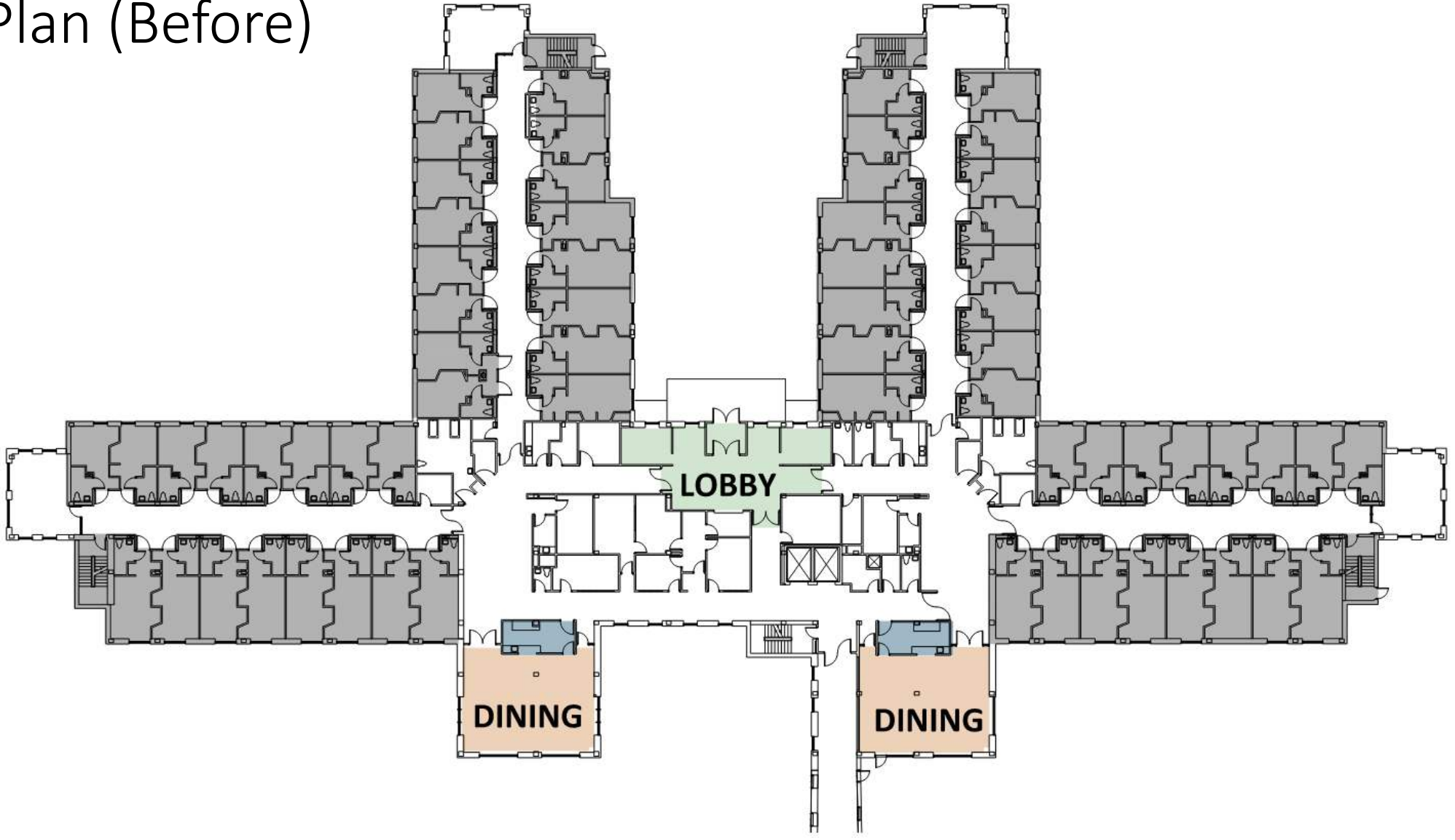




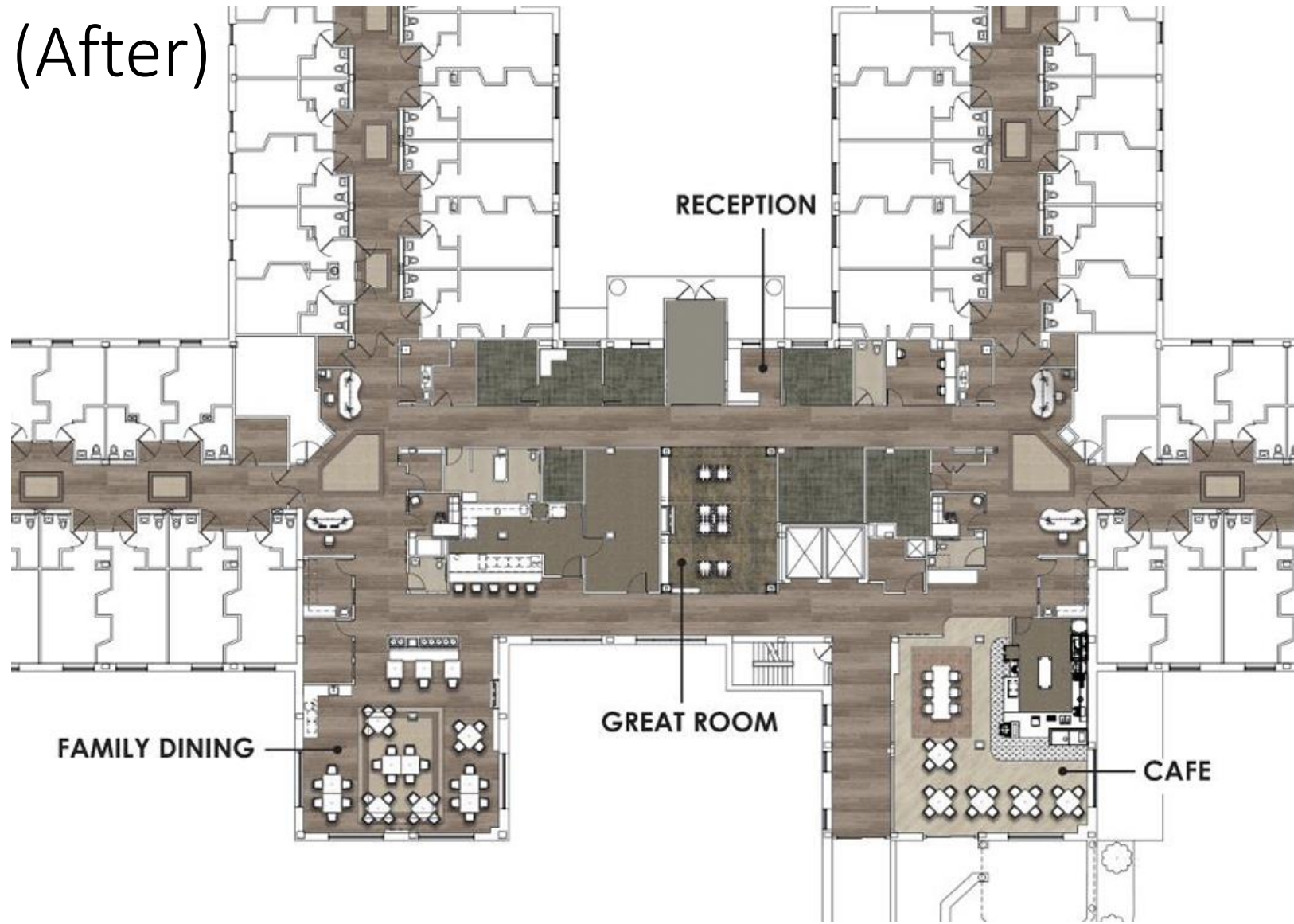
Masonic Pathways



Floor Plan (Before)



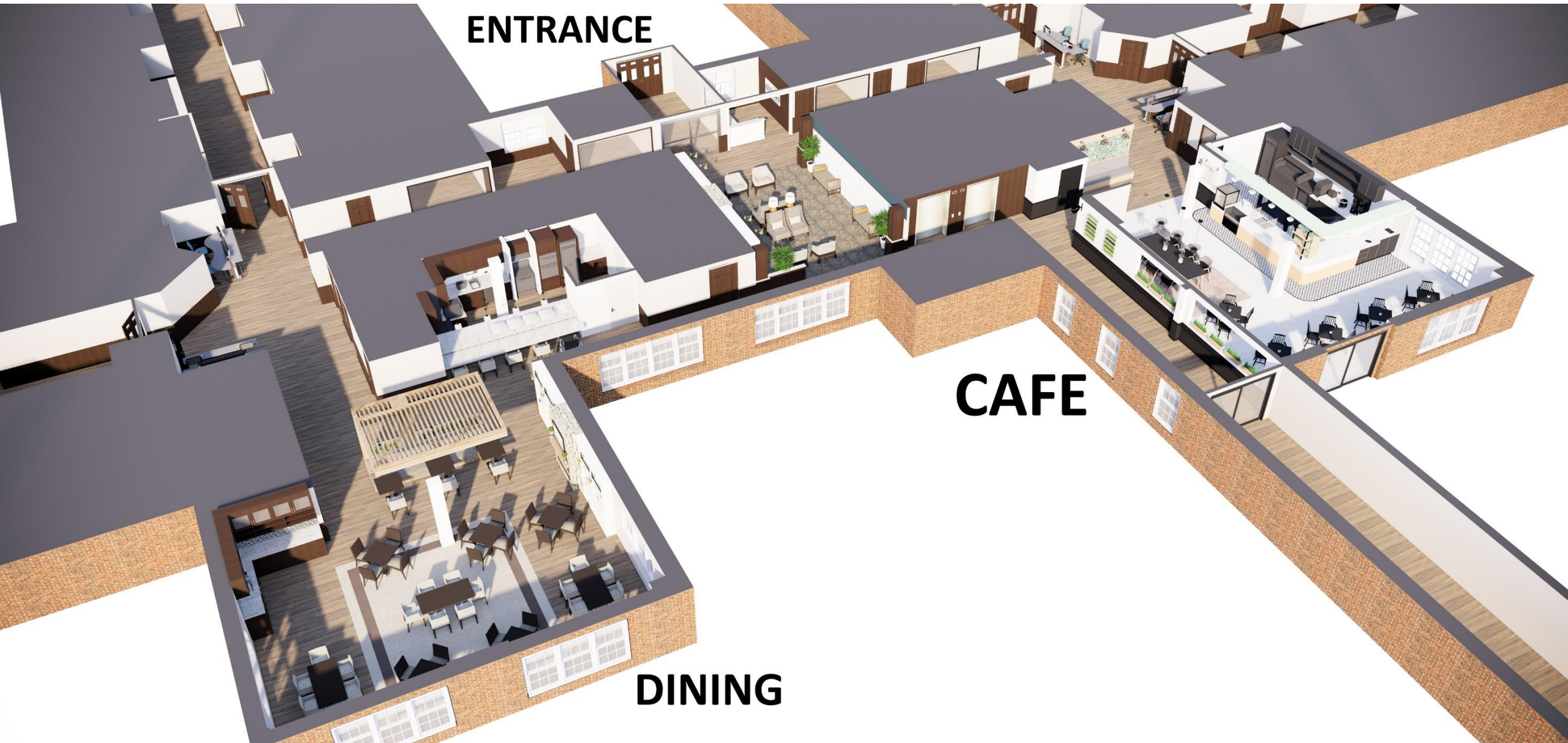
Floor Plan (After)



ENTRANCE

CAFE

DINING



Before:



After:



Photo Credit: John D'Angelo

Before:



After:



Photo Credit: John D'Angelo

Team Narrative:

Masonic Pathways made a commitment to the residents and staff to completely change the daily experience throughout the Skilled Nursing building. Dining Rooms, Activity Rooms, Lobby, and Staff Offices were all renovated and reconfigured for improved circulation and ease of use for the residents. In the culinary program, each dining room was opened up to remove the surrounding walls, allowing easier access and interactive dining sensory experience.

The first floor south dining room was treated in a special way to become a more open café environment. This dining venue is situated close to rehab patients and the main building circulation route, thus providing a space for family and staff to grab a bite and mingle. The café features a wood slat ceiling with a special wall covering mounted above and modern light fixtures hanging through the slats. Vinyl floors provide seamless transition under the tables and a tiled floor at the serving counter brings back memories from food service of the past. The café also opens to an outside patio, allowing warm weather enjoyment.

The café and outdoor patio are a popular place for eating and picture taking – as evidenced by the social media posts from Masonic Pathways.

Jury Comments:

- The Before and After is a stunning transformation. What a great way to engage family members and staff into a space that does not feel like you are in a nursing environment
- You would never guess this is skilled nursing which is so refreshing. The dignity that is created for residents to age through the continuum and not feel that when higher levels of care are required that you have to step into an institutionalized space that feels sterile and cold. This is a breath of fresh air. I appreciate the uniqueness of the palette and design. The greater utilization of the floor plan is central to the success of this project. Beautiful outcome.
- Great use of materials to establish a bright and fresh space in contrast with dull old environment; single space submission tied to larger impact on campus
- This is a very nicely detailed design promoting resident + staff socialization and interaction.
- ***As a nursing home administrator, I love to see renovations of SNF that provide more options in the higher levels of care. The before and after pictures show the huge difference. Love that this is close to the short-term rehab patients which many times enjoy a different type of dining experience and have a lot of visitors but also on the same floor as the long-term care residents who also enjoy variety. The different ceiling treatments and table and chair configurations offer visual interest provide separate options even within the same area.***



- Facility/Community: Shenandoah Memory Care at The Virginian
- Project: Memory Care Common Space Remodel and Renovation
- Location: Fairfax, Virginia
- Total renovation cost: \$97,875
- Cost per square foot: \$145
- Residents Served: Memory Care Assisted Living
- Completion Date: March 2022

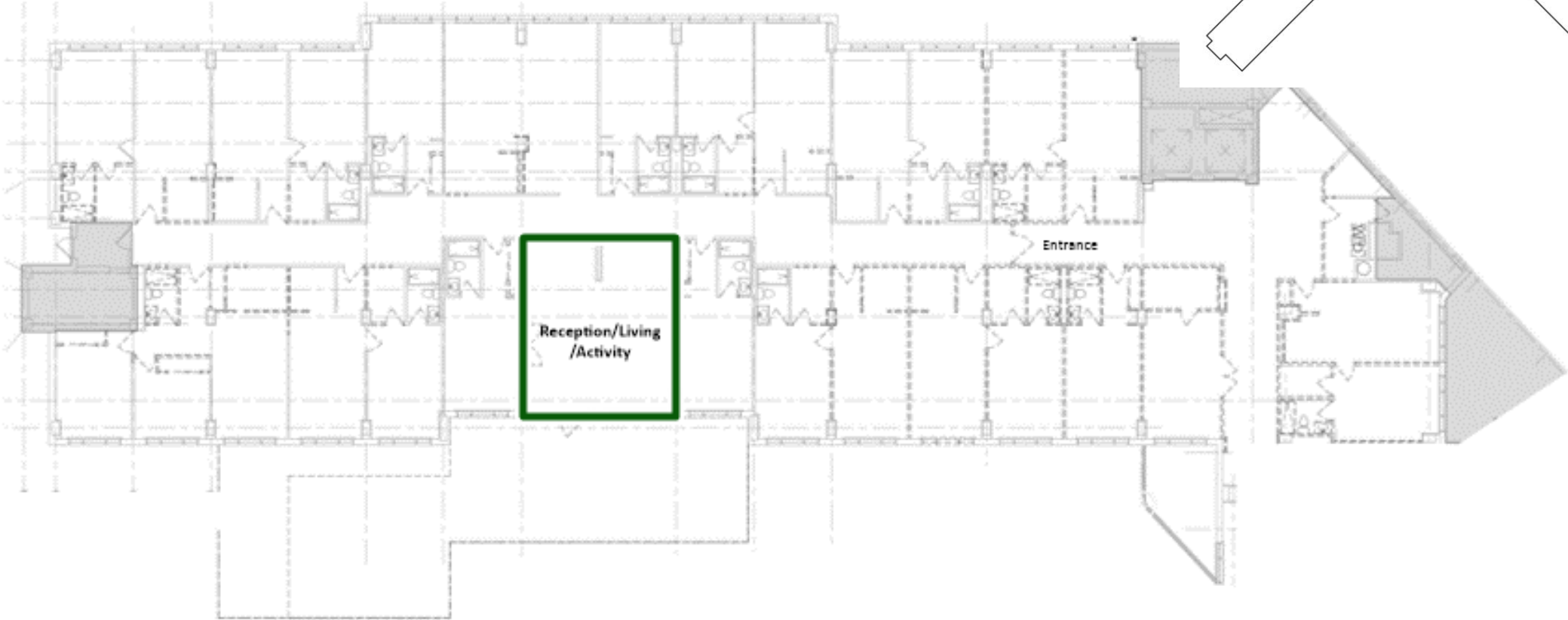
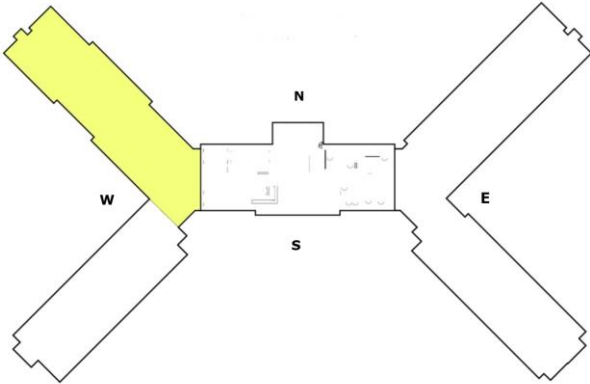
Shenandoah Memory Care™ at The Virginian – Memory Care Common Space [Fairfax, Va.]

Submitted by: Focus Healthcare Partners [Chicago]



Floor Plan (Before)

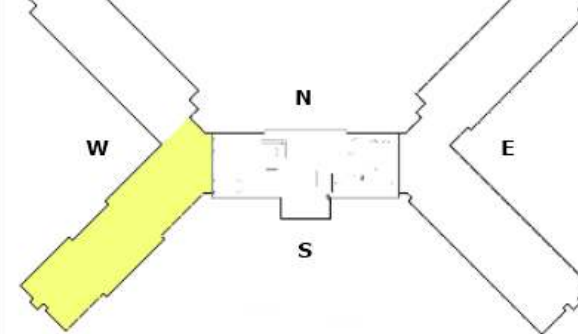
Northwest (Memory Care) Wing



Converted Independent Living Lounge. 575 sq. ft.

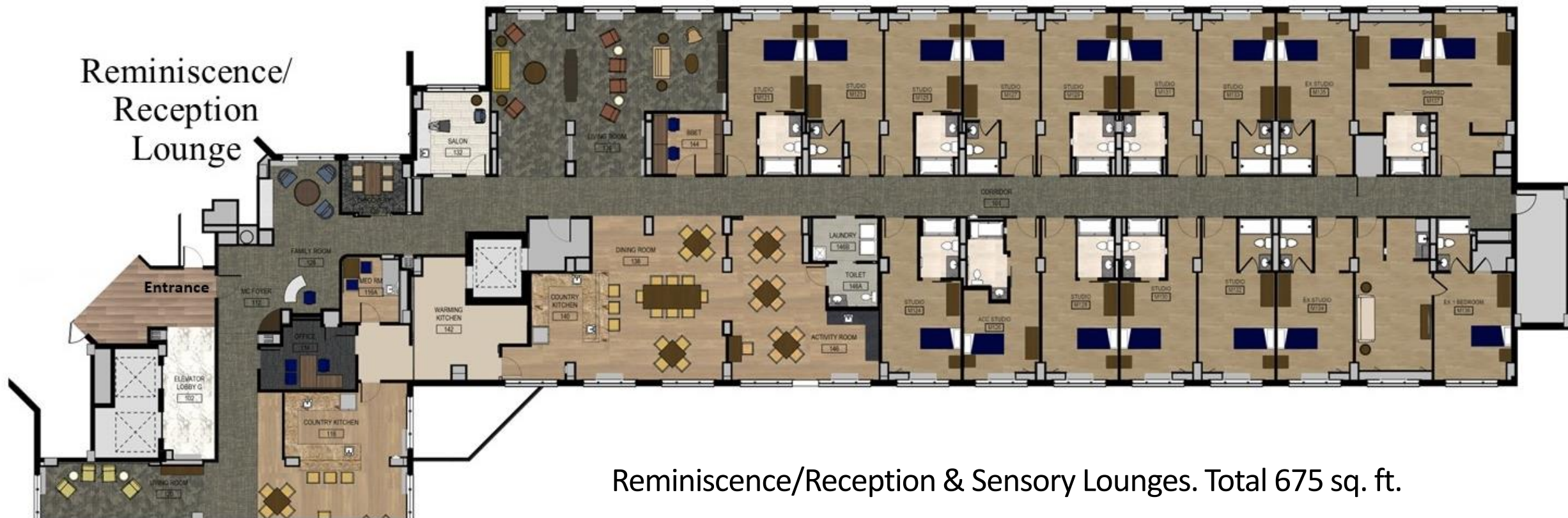
Floor Plan (After)

SW (Expanded MC) Wing



Sensory Lounge

Reminiscence/
Reception
Lounge



Reminiscence/Reception & Sensory Lounges. Total 675 sq. ft.

Before:

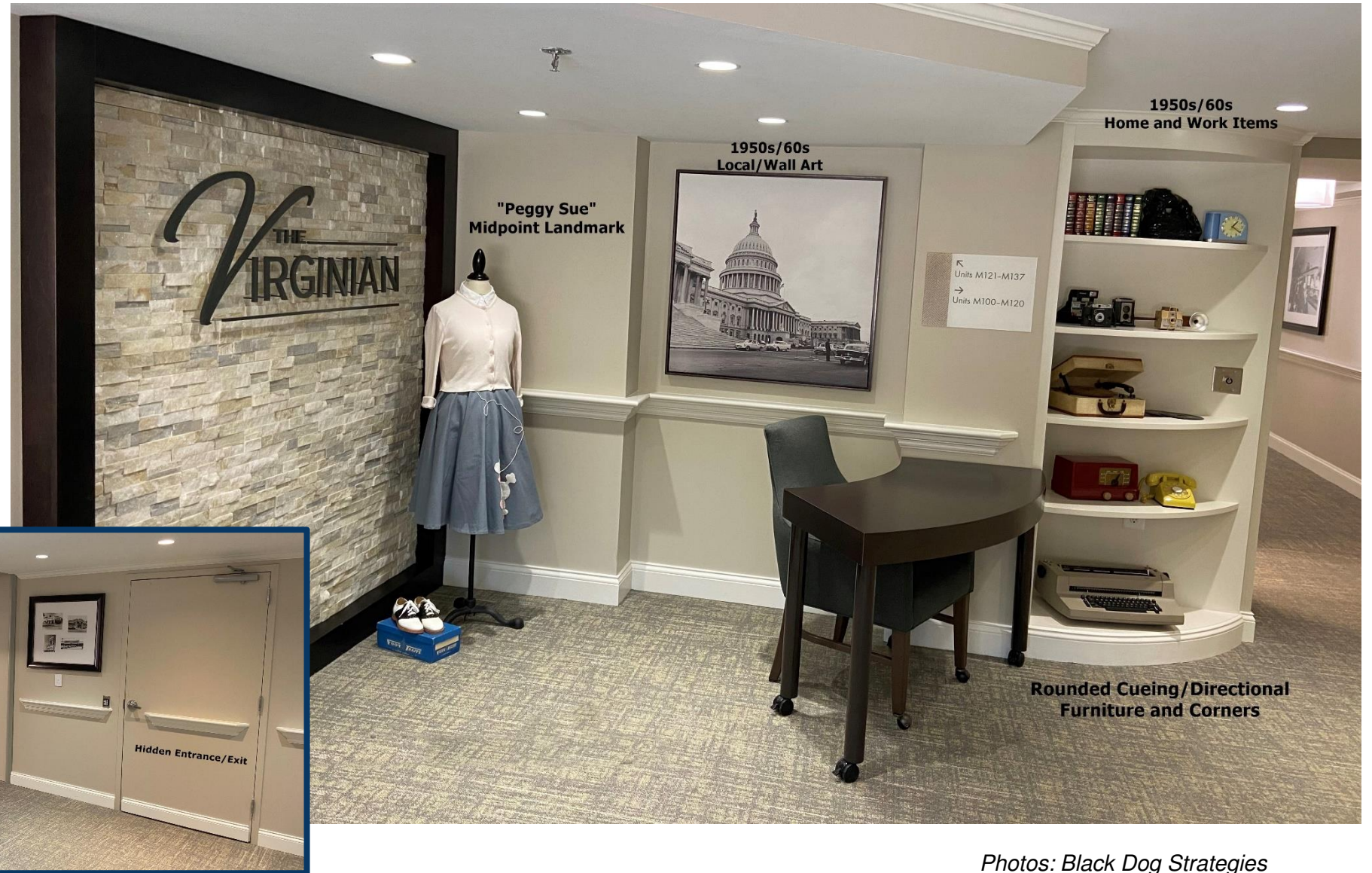


After:



Photos: Black Dog Strategies

After:



Photos: Black Dog Strategies

After:



Photos: Black Dog Strategies

After:



Photos: Black Dog Strategies

Team Narrative:

The prior memory care space had been converted from an Independent Living wing as part of a family-owned Life Plan Community 12 years earlier. Offering a single common area within a former lounge, the space incorporated no memory care design beyond a secured, end of hallway entrance, was poorly lit, worn, and could accommodate only 12 residents – insufficient to meet the memory care needs of the 300+ resident community.

New ownership determined the need to make expansion of memory care services not only the first priority within a multi-year renovation of the community, but to create a “Next Gen” model for memory care design through applications of both evidence-based practices and technology. Completed in March 2022, the project expanded services across two conjoining wings, including unique innovations in common area space shared by residents, visitors, and staff, highlighted by:

A Reminiscence/Reception Lounge turning generic reception space into a “Point-of-Entry” engagement opportunity for both residents and visiting family. Applying both the “Reminiscence Bump,” and evidence-based study indicating familiar environments enhance object and spatial memory, the area features 1950s/60s local high school yearbooks and historical Northern Virginia/DC items and photos, selected with the assistance of community residents. Located at the intersection of the two conjoining wings, the reminiscence theme, including poodle skirted dress mannequin “Peggy Sue,” additionally serve as a midpoint wayfinding landmark for residents traveling between wings.

A first-of-kind Sensory Lounge replaces former industry models of small, enclosed sensory rooms with an open concept design, while allowing passive, active, individual or group engagement and incorporating evidence-based features and technologies, including programmable circadian lighting, across the full spectrum of sight, sound, touch, and smell. An international award-winning hand-motion video system offers more than 60 games scientifically designed for memory care residents, with the community being among the first in the United States to implement.

Positive resident response was immediate, including a formally non-communicative, non-engaging resident routinely speaking and participating in activities, and a chronic exit seeking resident ceasing behavior. Evidence-based application of live fish displays, which have been shown to reduce anxiety and agitation within memory care environments, has been exhibited by residents, including one who enjoys spending time daily engaging with the fish, even naming her favorite and describing its unique personality.

Family engagement, which has been shown to be critically important to memory care resident quality of life, has increased, particularly within the Reminiscence Lounge, with residents and adult children enjoying engagement and conversation about home, work, and leisure items from the past, as well as historical photos of local landmarks, drive-ins, restaurants, and retailers. As described by the community’s Executive Director, “We’ve taken a space that had no life, and created a space that has given life back to our residents and families.”

Jury Comments:

- I think that this is an excellent example to providers to show that you can create a quality memory care environment in an existing building. The flow is exactly right (public to private) and there are enough landmarks and points of interest along the way to keep residents moving. The real key to this project's success will be the programming, but I am hopeful.
- A meaningful and magnificent transformation of small ordinary spaces into a first-rate memory care social center and with a low cost. Kudos to the design team and owner for providing key design elements that make the space promote independence for the residents. Amazing outcome for the two residents cited for their resulting drastic improved health.
- ***The spaces still seem small but are packed with appropriate cueing and activities. It is obvious the design team was knowledgeable of new approaches to care and the subtleties of improving the daily activities of those with memory diseases.***
- This was a very well thought out, researched approach to innovation, not only of the physical space - taking a large, institutional area and creating small meaningful spaces that as they write up indicates, is meeting their goal of enhancing resident quality of life. This is what should be central to any renovation of spaces in senior living, and the team nailed it! (I love the use of rounded walls and other features that were incorporated to support way finding.) Not the largest of most involved of the submissions, but I believe the one that has the most positive impact on individual lives.
- Aside from being a beautiful transformation, the use of evidence-based practice to promote quality of life for the residents living there was clearly top of mind. Considering wayfinding, circadian lighting, sensory and tactile modalities, and biophilia as part of the design process is to be commended.
- I commend them for prioritizing the Memory Care, most do not make this area priority. They used evidenced-based practices for so many elements of this project, i.e., color theme, reminiscing items, sensory stimulation, wayfinding and built a structure to decrease exit seeking. They used technology to provide state of the art lighting and innovative activities.

The 15th Remodel / Renovation Entry and Jury Process

Have your Project(s) Recognized

Environments for Aging is pleased to announce our 15th Annual Remodel/Renovation Competition!

- Submissions will focus on single spaces, including dining spaces, lounges/activity areas, lobbies, and other resident spaces.
- Winners will receive special recognition at our annual Environments for Aging Conference + Expo (Spring 2024), and bonus coverage of their projects in the Winter 2023 issue of Environments for Aging.
- In addition, all participating firms will be included in a Remodel/Renovation Gallery, also appearing in the Winter 2023 issue, with a quarter-page feature of their project, allowing readers an opportunity to view all of the competition entries.
- **Entry Fee per Submission: \$700**
- **Reservations due August 3rd; Presentations due August 24th**
- New in 2023: In addition to completed projects, EFA is now accepting projects in progress and unbuilt/conceptual designs.
- Submission must include quality renderings.

For more information about this program, contact Donna Hidalgo:
donna.hidalgo@emeraldtx.com; 210.419.9017

environments for aging

15TH ANNUAL REMODEL/RENOVATION COMPETITION CALL FOR SUBMISSIONS

If your organization or firm has recently renovated space(s) within a senior living community, this competition is for you!

The top three projects will receive Gold, Silver, and Bronze awards. All projects will be published* in the Winter 2023 print and online editions. Award recipients will be honored at the 2024 Environments for Aging Conference + Expo.

RESERVATIONS DUE: AUGUST 3
PRESENTATIONS DUE: AUGUST 24
Entry fee: \$700 per submission

Entries must detail the renovation of a single space, which may be any area within a senior living community, such as dining areas, resident rooms, activity zones, spas, chapels, theaters, and more.

New in 2023: In addition to completed projects, EFA is now accepting projects in progress and unbuilt/conceptual designs. Submission must include quality renderings.

LEARN MORE: EFAmagazine.com/renovate
CONTACT: Donna Hidalgo at 210.419.9017 or donna.hidalgo@emeraldtx.com

* All projects will be featured in a Remodel/Renovation Gallery, also appearing in the Winter 2023 issue, with a quarter-page project description that allows readers an opportunity to view all of the competition entries. Award-winning projects will be upgraded to a full page or spread.

2022 Gold Winner: Sherandoah Memory Care® at The Virginia - Memory Care Common Space, submitted by Focus Healthcare Partners. Photo: Black Day Strategies

TIPS FOR A GREAT SUBMISSION:

- Provide a legible floorplan
- Include great pictures – use the images to support your narrative and provide captions
 - BEFORE – make sure images directly relate to the improved area and their changes
 - AFTER – look for the “wow” factor and/or the design link, to the program
- Define “the difference maker” and the impact on residents
- Offer how the operator has benefitted from the improved design
- Submit the narrative story written by project team member

REMODEL/RENOVATION COMPETITION

Asbury Bethany Village – The Bistro MECHANICSBURG, PA.
Submitted by: **THW Design** ATLANTA



AIA Continuing Education Provider

This concludes The American Institute of Architects
Continuing Education Systems Course



Questions?



Darla Esnard
Principal
Ankrom Moisan
darlae@ankrommoisan.com

Tom Dillenbeck, AIA
Sr. Vice President
Hobbs + Black
Architects
tdillenbeck@hobbs-black.com

Andrew Carle
President
Carle Consulting
acarle@carleconsulting.com

Ric D'Amico
Sr. VP, Real Estate
Dev/Svcs
Acts Retirement Life
Communities
ric.damico@actslife.org

Thank you for joining us today!

Please complete the survey.



Society for the Advancement of
Gerontological Environments