

**2022 EFA Design
Showcase Awards: A
Presentation of
Industry-Leading
Design Excellence**

*Presented by Rob Simonetti, Amy Bursey,
Amber Caton, Tim Gordon, Alicia Nicolay,
and Robert Weaver*



Society for the Advancement of
Gerontological Environments

Presenters:

Rob Simonetti, AIA, LEED AP, BD+C, Senior Living Studio Leader, [LaBella Associates](#)
SAGE President

Amy Bursey, President, Monogram Design Consultants, LLC

Amber Caton, Design Director, [Wegman Design Group](#)

Tim Gordon, AIA. Designer & Project Architect, [Scott Edwards Architecture](#)

Alicia Nicolay, IIDA, NCIDQ, RID, Director of Design, [Spellman Brady & Co.](#)

Robert Weaver, AIA, Founder, Principal, [KGRW & Associates](#)



Simonetti



Bursey



Caton



Gordon



Nicolay



Weaver

SAGE is all about education, it is at the core of what we do. We bring the latest knowledge and developments to you from all aspects of senior living design.

[SAGEfederation.org](https://www.sagefederation.org)



You will be muted during this webinar.

This webinar is being recorded, and a link to the recording will be emailed to all registrants within two business days.

SAGEfederation.org

Linger a little longer after today's webinar!

Linger
Linger

AIA Continuing Education Provider

AIA Provider Number: 502111285

2022 EFA Design Showcase Awards: A Presentation of Industry-Leading Design Excellence

SAGE1022

Presented by Rob Simonetti, Amy Bursey, Amber Caton, Timothy Gordon, Alicia Nicolay, and Robert Weaver

10/5/22

This program is AIA-approved for one Learning Unit (LU)

SAGEfederation.org

AIA Continuing Education Provider

Credit(s) earned on completion of this course will be reported to [AIA CES](#) for AIA members. Certificates of Completion for both AIA members and non-AIA members are available upon request.

This course is registered with [AIA CES](#) for continuing professional education. As such, it does not include content that may be deemed or construed to be an approval or endorsement by the AIA of any material of construction or any method or manner of handling, using, distributing, or dealing in any material or product.

Questions related to specific materials, methods, and services will be addressed at the conclusion of this presentation.

This presentation is protected by US and International Copyright laws. Reproduction, distribution, display and use of the presentation without written permission of the speaker is prohibited.

© SAGE 2022

[SAGEfederation.org](https://www.sagefederation.org)

Course Description:

This session will review the Award of Merit and Honorable Mention-winning projects from the 2022 EFA Design Showcase. The session panelists will include team members representing each winning project in addition to one member of the jury team. Panelists will describe each of the projects indicating how the project achieved excellence across the competitions four metrics: Innovation, Community/Team Collaboration, Aesthetics, and Operational Performance. The juror panelist will share jury team insights into each project as well as review concepts noted in this year's submissions, which represent important ideas for the design community to incorporate into future environments.

Learning Objectives:

- Learn about design attributes, challenges overcome, and solutions employed to create award-winning environments for aging.
- Understand innovative industry and design trends that represent important concepts to incorporate into future environments.
- See how senior housing providers are positively impacting resident quality of life and the experiences of staff and family.
- Gain valuable insights into the design submission, review, and award process.

ABOUT SAGE



A collaborative group of professionals advocating for innovative and meaningful environments for older adults.

Founded by 2022Changemaker Maggie Calkins

FREE AIA-approved webinars every month and nearly 80 webinar recordings in the Members-Only section of the SAGE website.

Access SAGE Post Occupancy Evaluation White Papers

Engage in great industry initiatives, networking opportunities, Member Receptions





“Aaaay...

SAGE Members enjoy a **10% discount** off EFA conference registrations and **15% off** Pioneer Network conference registrations.”



Published each year in the Spring issue of *Environments for Aging*, the EFA Design Showcase offers a compilation of architecture and interior design projects representing outstanding innovative design solutions in new or renovated senior care environments across the nation.

***2023 Environments for Aging Design Showcase:
Reservations due November 11, 2022
Presentations due December 2, 2022***

www.efamagazine.com/events/design-showcase

THE 2022 DESIGN SHOWCASE JURY



Jury makeup

- Architects
- Interior Designers
- Providers
- Consultants, Regulators, Educators

Competition Metrics

- Aesthetics
- Experience/Collaboration
- Innovation
- Operations/Well-Being

ZOOM 2022!



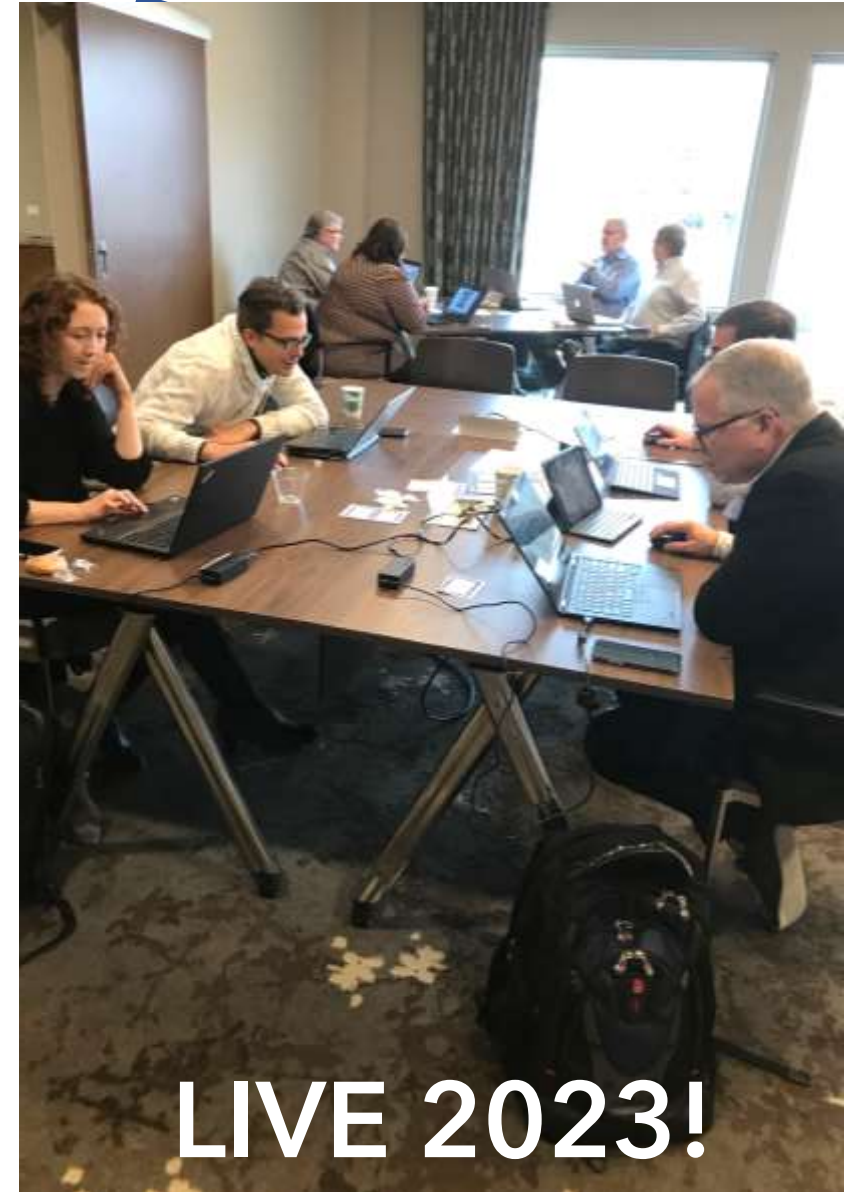
THE 2022 DESIGN SHOWCASE JURY

Jury makeup

- Architects
- Interior Designers
- Providers
- Consultants, Regulators, Educators

Competition Metrics

- Aesthetics
- Experience/Collaboration
- Innovation
- Operations/Well-Being



LIVE 2023!



**2022 EFA DESIGN
SHOWCASE
WINNERS!**

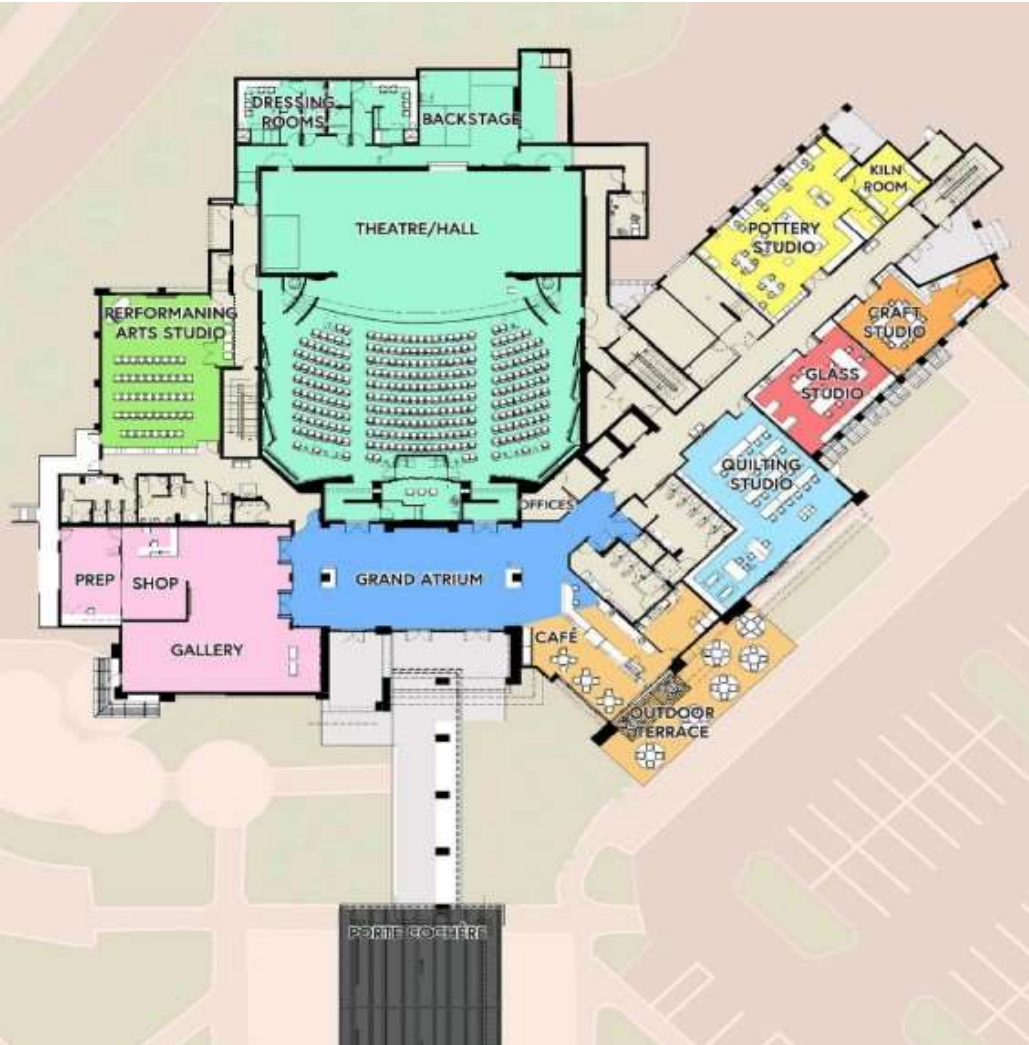
Tribby Arts Center at Shell Point Retirement Community

Fort Myers, FL



WEGMAN DESIGN GROUP





SECOND FLOOR LEGEND

- GRAND ATRIUM
- GALLERY
- THEATRE/HALL
- PHOTOGRAPHY STUDIO
- MUSIC PRACTICE ROOM
- PAINTING STUDIO
- COMMON AMENITIES: LITERARY LOUNGE, MAT ROOM, MEDIA LOUNGE, CONFERENCE ROOM
- CIRCULATION



Grand Atrium



Tribby Arts Center at Shell Point Retirement Community

Fort Myers, FL



WEGMAN DESIGN GROUP



The Connie Brown Hall



Tribby Arts Center at Shell Point Retirement Community

Fort Myers, FL



Tribby Gallery and Serendipity Gift Shop – Top Left

Tribby Café – Bottom Left

Literary Lounge - Bottom





Stained Glass Studio



Ceramics Studio





Quilting and Textile Studio



The Painting Studio



Music Practice Room



Photography Studio



JURY
COMMENTS

Great Program- wide variety of things to do (not typical senior)

Absolutely no vibe of senior living . Great example of what can be done as a community forward project.

Loved the push for resident engagement

Truly changing the lives of the people there

Nice aesthetic, simplicity of palette allows for the people and the art to be the story

Great details to set up these spaces for the specific needs.

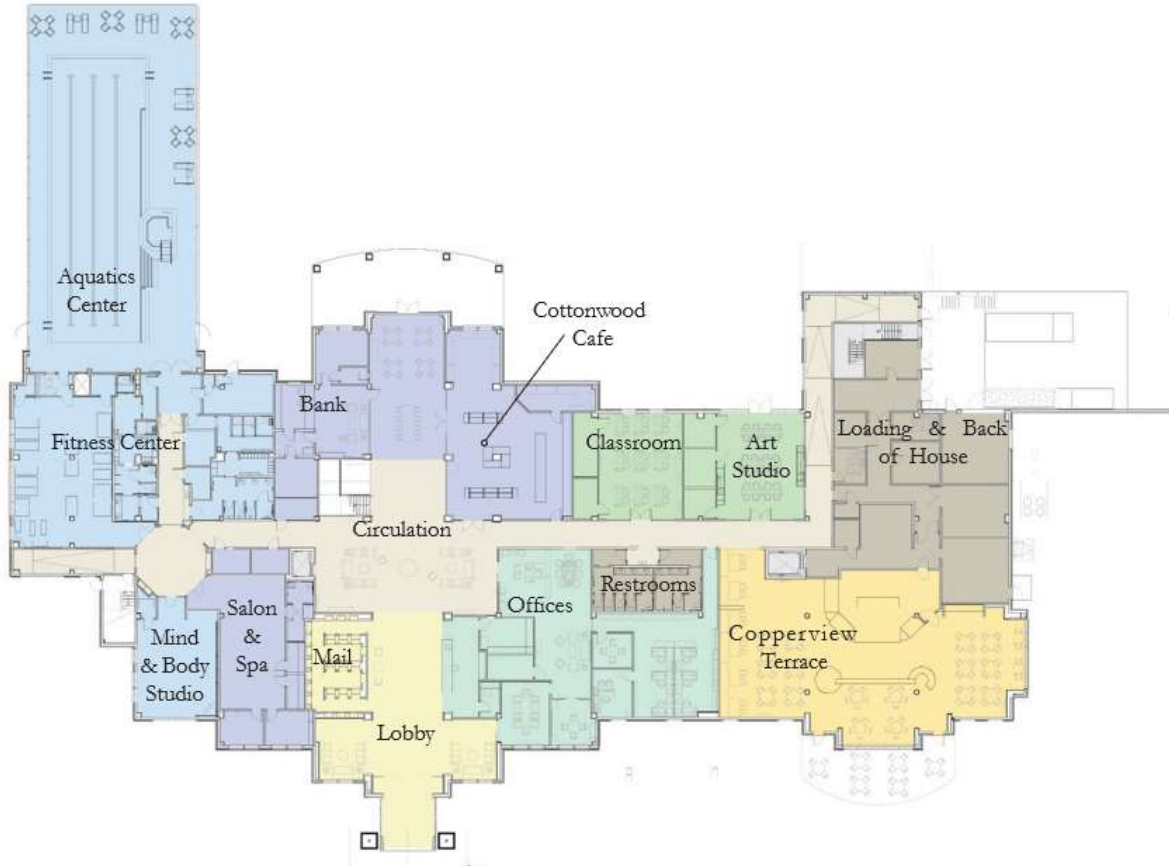


HONORABLE
MENTION

Summit Vista Life Plan Community

Taylorville, Utah





Summit Vista Life Plan Community

Taylorville, Utah





The Olympus Room



Living Room



Broadfork Bistro



Copperview Terrace





Wellness Amenities



Staff Spaces and Engagement



JURY
COMMENTS

The different experiences of each area allowed for choice

Great effort to include staff and consider staff needs was commendable

Created a new zoning category – in a gravel pit

Average age of move in was 74 which is unusual

Different use of colors than we are used to seeing

Sagewood IL & Clubhouse

Phoenix, AZ



HONORABLE
MENTION





CANYON

== CAFE MENU ==





THE SONORAN 

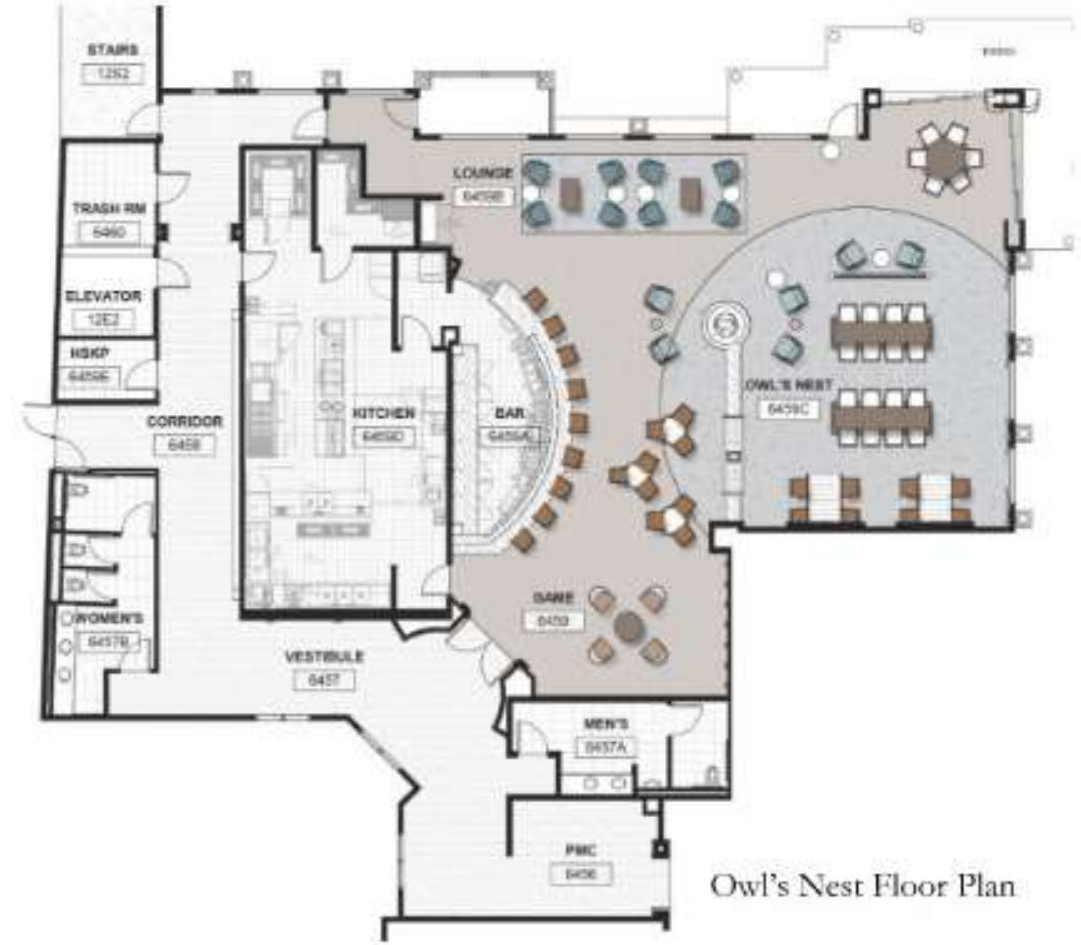




Alise O'Brien Photography



This is the ideal place for a nightcap or a friendly game of shuffleboard. The decorative light fixtures were selected to mimic branches and the sconces offer playful light dancing across the wall.



Owl's Nest Floor Plan





JURY
COMMENTS

Lovely project- appreciate the “life” that is in the design, a strong art package and unique use of lighting.

Exceptional branding of the dining venues

Love the way the ramp was incorporated into the front landscape

Definitely an improved efficiency for the food service

Strong project of interior design.

Rose Villa Senior Living

Portland, OR



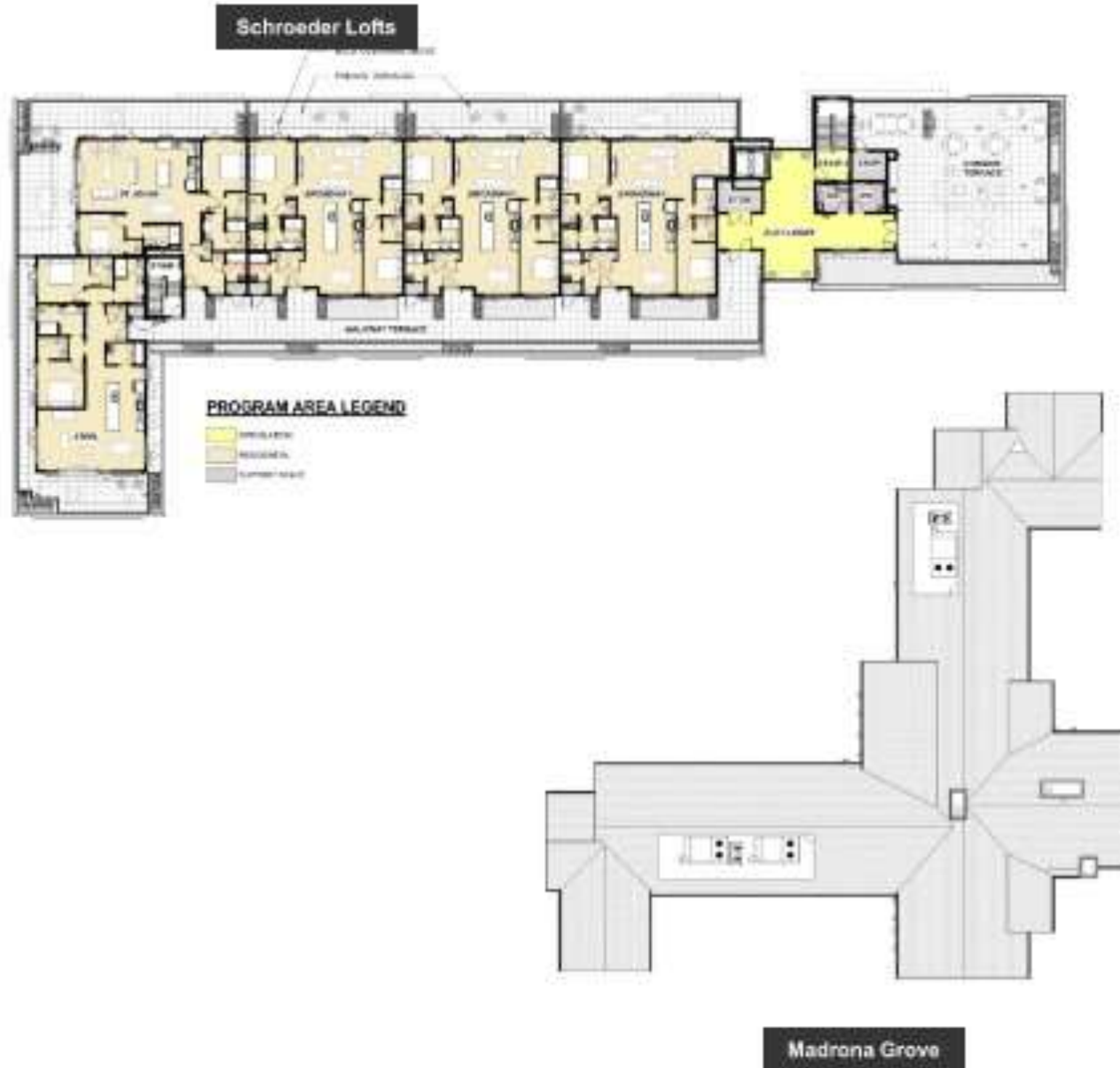
HONORABLE
MENTION

S|E|A

SCOTT | EDWARDS ARCHITECTURE LLP.

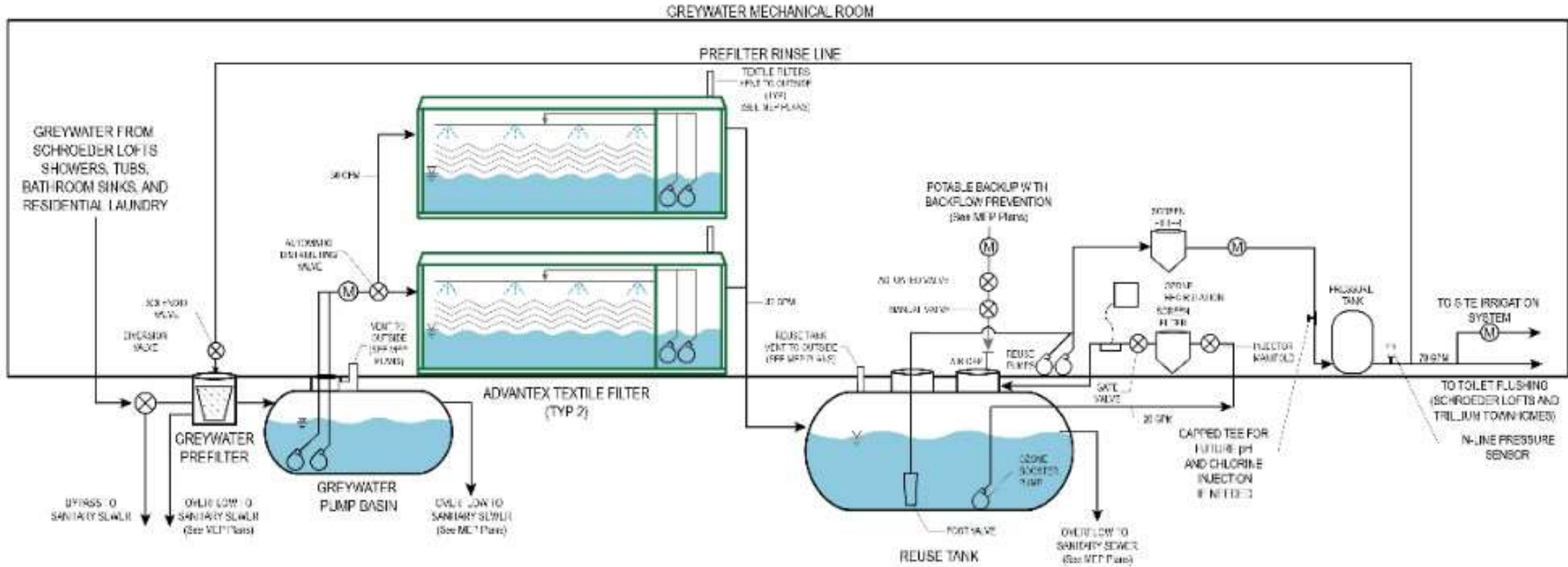






GREYWATER TREATED FOR REUSE = 1,200 gpd
 PEAK NON-POTABLE SUPPLY = 70 GPM
 NON-POTABLE SUPPLY PRESSURE = 55 PSIG

(M) = MFTFR
 (P) = PUMP
 (X) = VALVE



Water Reclamation

Rose Villa Senior Living

Portland, OR



Schroeder Lofts

Rose Villa Senior Living

Portland, OR



Schroeder Lofts



Rose Villa Senior Living

Portland, OR



Madrona Grove



Madrona Grove
Skilled Nursing - Access to outdoors



Madrona Grove



Employee Lounge
Access to outdoors/lots of light

Rose Villa Senior Living

Portland, OR



Outdoor Spaces

S|E|A

JURY
COMMENTS

SNF ability to wheel beds outside- amazing

Exterior facades fit local vernacular

Intergenerational Care- Child Development Center and the placement of that for those that want to participate

ROSIE gray water system is wonderful to see

Sustainable Design, Grey water system, native landscaping bird habitat, terrace and patio decks for each unit!

A lot of effort to break down the scale and give a residential feel

Great staff space

AIA Continuing Education Provider

This concludes The American Institute of Architects
Continuing Education Systems Course



QUESTIONS

Rob Simonetti, AIA, LEED AP, BD+C, Senior Living Studio Leader, [LaBella Associates](#)
SAGE President rsimonetti@labellapc.com

Amy Bursey, President, Monogram Design Consultants, LLC abursey@monogramdesignconsultants.com

Amber Caton, Design Director, [Wegman Design Group](#)
amber@wegmandesigngroup.com

Tim Gordon, AIA. Designer & Project Architect, [Scott Edwards Architecture](#) tgordon@seallp.com

Alicia Nicolay, IIDA, NCIDQ, RID, Director of Design, [Spellman Brady & Co.](#)
anicolay@spellmanbrady.com

Robert Weaver, AIA, Founder, Principal, [KGRW & Associates](#) robert.weaver@kg-rw.com



Simonetti



Bursey



Caton



Gordon



Nicolay



Weaver

Linger a little longer!

Linger
Linger

Thank you for joining us today!

Please complete the survey.



Society for the Advancement of
Gerontological Environments